

This guide provides instruction on how to install the Campus Printing Solution on a personal computer.

1. Please visit our software page to download the driver. Due to the file size, please be patient, as the download may take some time. After the download is complete, double-click on the downloaded file to open it (not compatible with Windows 8 Metro Apps).

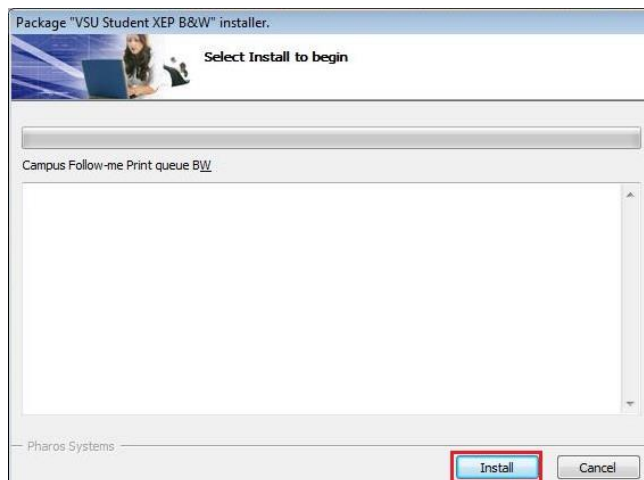


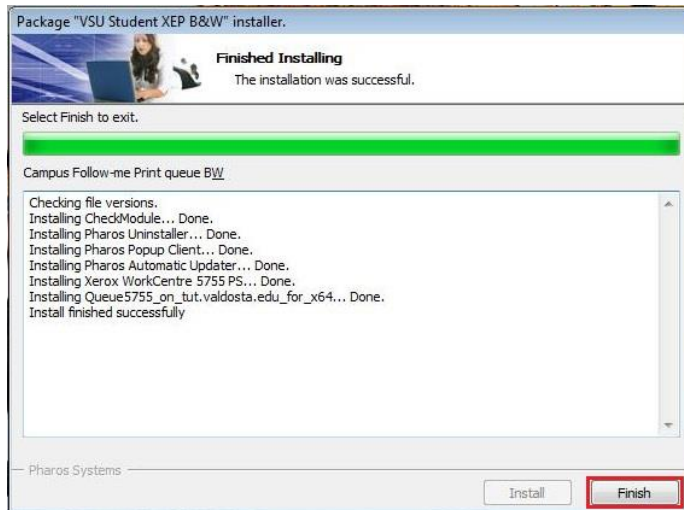
Software Downloads

2. Next double-click to run the file for the desired printer (either black and white, or color). Please remember that you will need to return to this step in the instructions if you wish to install the other driver (Windows computers only). Several prompts may appear. Click Run button at each.



3. You will now need to click on the Install button on the installer window.





4. Finally click on the Finish button to complete the installation. Now that installation is complete, you may repeat steps 2 and 3 to install the other driver.