

THIS IS THE

1957

# PINE CONE

*Published by the  
Student Body of*  
**VALDOSTA  
STATE COLLEGE**

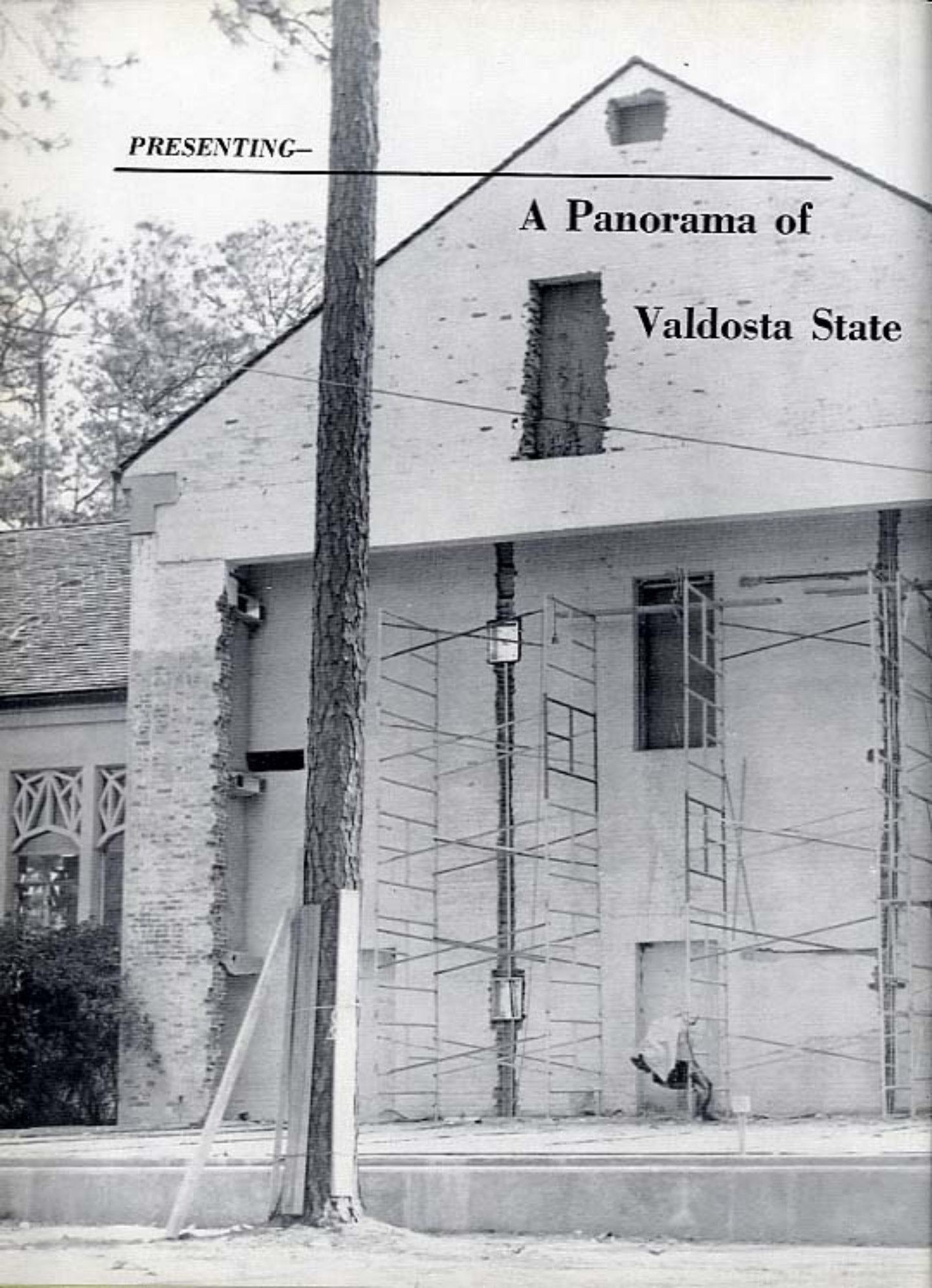
Valdosta, Georgia



*PRESENTING—*

---

**A Panorama of  
Valdosta State**

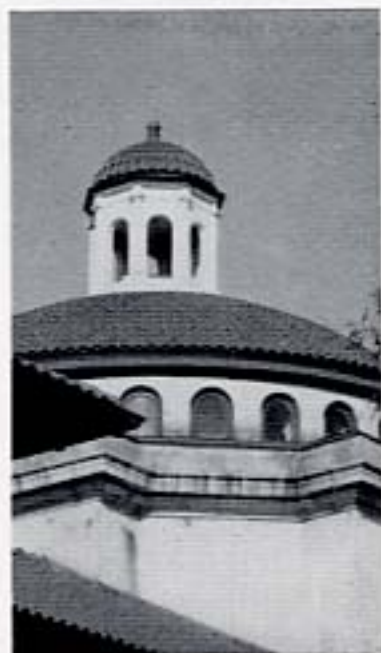




*This Is a Complete Picture of*

# *Student Life*

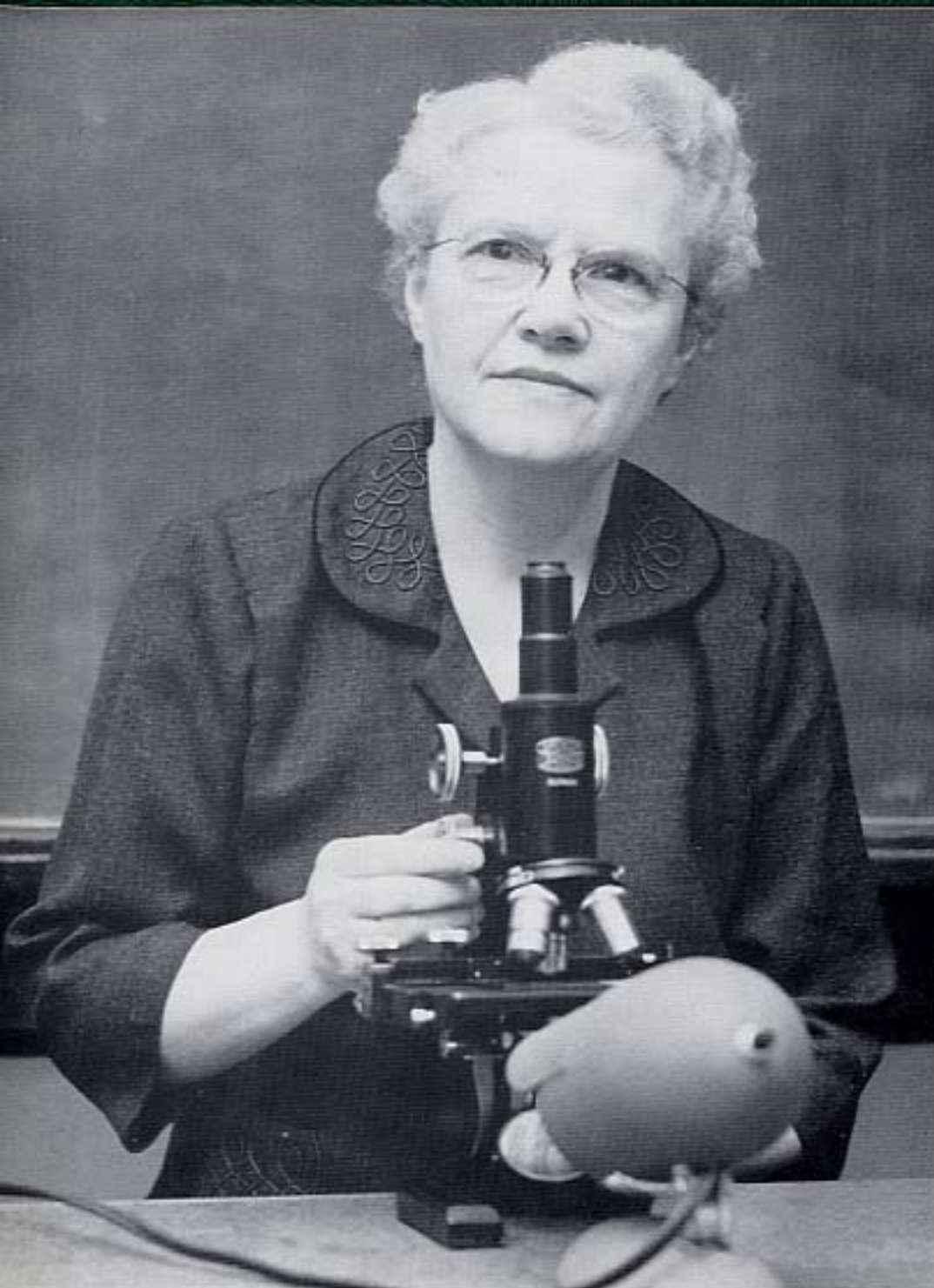
AT  
VALDOSTA STATE



6-18-57

33775





**DR. BEATRICE NEVINS**

Into every student's life, there usually comes one person who is the ideal friend, mentor and guide; the sort of person that always stands ready to aid a student with a problem, or to provide a few moments of genuine friendship. Dr. Nevins is that kind of person. To the departing seniors, she will always be remembered as the smiling little lady of the Biology labs.

## **DEDICATION**





---

## CONTENTS

OPENING	1
ADMINISTRATION AND FACULTY	6
ACTIVITIES	55
SPORTS	83
BEAUS AND BELLES	90

— We hope you like our  
*VALDOSTA STATE*

THIS IS THE

---





1957

# ADMINISTRATION FACULTY CLASSES





**DR. J. RALPH THAXTON**  
A.B., M.A., Ph.D.  
*President*

## THE PRESIDENT AND DEANS

**DR. J. A. DURRENBERGER**  
A.B., A.M., Ph.D.  
*Academic Dean*



**MRS. JOE WISENBAKER**  
A.B., M.S.Ed.  
*Dean of Women*  
*Associate Professor of Sociology*



**DR. J. GRAHAM WALL**  
A.B., M.A., Ed.D.  
*Acting Dean of Men*  
*Assistant Professor of Mathematics*







MR. SHEALY E. McCOY  
B.B.A., LL.B.  
*Comptroller*



MRS. WILLIAM M. THOMAS  
A.B.  
*Registrar*

## STAFF

MRS. GRACE B. JONES  
*Assistant to the Registrar*

MR. JACK E. McGRAW  
B.S.  
*Director of Public Relations*



*This Is the*

---



**MR. LEROY BABCOCK**  
B.Ed., M.S.  
*Associate Professor of  
Mathematics and Physics*



**MRS. LEE M. BENNETT**  
A.B.  
*Instructor in Art*



**DR. BERNARD BETTMAN**  
B.A., M.A., Ph.D.  
*Professor of Chemistry*



**DR. TED W. BOOKER**  
B.S.Ed., M.A., Ph.D.  
*Professor of Education*



**MR. WILLIAM M. CALHOUN**  
A.B., B.S., M.A.  
*Assistant Professor of English*



**DR. MARJORIE E. CARTER**  
B.S., M.A., Ph.D.  
*Associate Professor of Biology*



1957

# FACULTY

MR. WALTER COTTINGHAM  
A.B., M.Ed.  
*Assistant Professor of  
Physical Education*



MR. JAMES B. DALES  
B.B.A., M.A.  
*Assistant Professor of  
Accounting*



MR. WILLIAM M. GABARD  
A.B., M.A.  
*Assistant Professor of History*

DR. HAROLD S. GULLIVER  
B.A., A.M., Ph.D.  
*Professor of English*



MR. A. SPENCER JARNIGAN  
A.B., M.A.  
*Assistant Professor of  
Education and Psychology*

MR. UNO KASK  
B.S., M.A.  
*Assistant Professor of  
Chemistry*



*This Is the*

---

**MISS THERA HAMBRICK**  
A.B., B.S. in L.S.  
*Assistant Librarian*

**MRS. CORINNE S. KNIGHT**  
B.S., M.A.  
*Associate Professor of  
Education*



**MR. NOAH LANGDALE, JR.**  
A.B., LL.B., M.B.A.  
*Assistant Professor of  
Economics and Social Science*

**MR. J. CLAYTON LOGAN**  
B.F.A., M.F.A.  
*Associate Professor of Music*



**MRS. MATILDA MATHIS**  
B.S.  
*Instructor in  
Physical Education*

**DR. BEATRICE NEVINS**  
Ph.B., Ph.M., Ph.D.  
*Professor of Biology*



1957

# FACULTY

MRS. GERTRUDE G. ODUM  
B.S., A.M.  
*Associate Professor of English*

MISS LILLIAN PATTERSON  
A.B., B.S. in L.S.  
*Librarian*



MR. JOSEPH W. PEMBER  
A.B., M.F.A.  
*Associate Professor of Art*

MISS MILDRED M. PRICE  
A.B., A.M.  
*Associate Professor of History*



MISS SARALYN SAMMONS  
A.B., M.A.  
*Associate Professor of  
Secretarial Science*

MISS LOUISE A. SAWYER  
B.S., M.A.  
*Associate Professor of Speech*





# FACULTY

**MR. WEBSTER W. TEAGUE**  
B.M., M.M.E.  
*Assistant Professor of Music*

**DR. SAPELO TREANOR**  
A.B., A.M., Ph.D.  
*Professor of Modern  
Foreign Languages*



**MRS. CHARLES L. FLOYD**  
*Instructor in  
B.S.  
Physical Education*



**MRS. JOSEPH S. MADDOX**  
*Secretary to the President*

**MRS. MARJORIE BLAND**  
*Assistant Comptroller*

**MRS. LOIS HANCOCK**  
*Secretary to Comptroller*

# STAFF







**MRS. MARY H. CROOM**  
*Secretary to Academic Dean*  
*Secretary to Registrar*

**MRS. J. A. SCONYERS**  
*Assistant Dietitian*  
*House Director, Senior Hall*

**MRS. MILLIE B. KNOWLES**  
*House Director, Ashley Hall*

## STAFF

**MRS. JANET S. MAYNARD**  
*House Director, Converse Hall*

**MRS. GRADY BENNETT**  
 A.R., R.N.  
*College Nurse*

**DR. R. L. STUMP**  
 M.D.  
*College Physician*





**MRS. EVA A. SHRIVALLE**  
*Dietitian*

**MRS. MURRAY JOLLEY**  
*Assistant Book-Store Manager*



**MR. MURRAY JOLLEY**  
*Manager, Student Center*





## SENIOR CLASS

THESE ARE THE SENIOR CLASS OFFICERS:  
*At Their Favorite Occupation!*

TRAVIS HIGGINBOTHAM, *President*; MARY OLLIE WARD, *Treasurer*;  
MARGIE SMITH, *Secretary*, and RONNIE HAIRE, *Vice-President*





**HAROLD ALLEN**  
*Valdosta, Georgia*



**MERLE MELISSA BAKER**  
*Norman Park, Georgia*

Major: History                      Minor: Music  
IRC 2, 4, President 3, Vice-Pres. 4; WRHC 1, 2,  
3, 4, 2nd Vice-Pres. 3, Pres. 4; Glee Club 1; YWCA  
1, 2, 3, 4; "Y" Cabinet 2, 3, 4, Secretary 3; BSU  
2, 3, 4, Secretary 3, Treasurer 4.

**S E N I O R S . . .**

**WALTER STEWART BARTEE**  
*Cordale, Georgia*

Major: Economics                      Minor: History  
"V" Club 3, 4; Circle K 3, 4, Treasurer 4; BSU  
3, 4; IRC 3, 4; Fins and Flippers 3, 4; Basketball  
3, 4; Baseball 3, 4; Transfer from Middle Georgia  
College Junior Year.

**MINNIE LEE BASKIN**  
*Lakeland, Georgia*

Transfer from Tift College at Forest, Georgia.







**JACK HILL BATES**  
*Valdosta, Georgia*



**ZEPHPOE BELCHER**  
*Lenox, Georgia*  
Major: Social Work      Minor: English  
English Club 1, 2, 3, 4.

. . . S E N I O R S

**WILLIAM BRIGMAN**  
*Hahira, Georgia*

Major: Bus. Admn.      Minor: History  
IRC 2, 3, 4.

**JAMES ALLEN BROOKS**  
*Alapaha, Georgia*

Major: Sociology      Minor: English  
Circle K 3, 4, Secretary 4; YMCA 3, 4, Secretary 3,  
4; Dormitory Council President 4; Transfer from  
South Georgia College.





**BILLIE LANG BURNEY**  
*Valdosta, Georgia*

Education Club 4.



**PAULINE L. BUSH**

*Eastman, Georgia, and Dyke, Virginia*

Major: Sociology

Minor: English

## S E N I O R S . . .

**HANSON R. CARTER**

*Valdosta, Georgia*

Major: Bus. Adm.  
Phi Kappa Phi 3.

Minor: History

**JACK CARTER**

*Valdosta, Georgia*

Managing Editor Campus Canopy 1, Editor 2; Mu Alpha 1, 2, 3, 4, Secretaries 1, 2, Vice-Pres. 4; SGA 2, 4; Who's Who in American Colleges and Universities.







**AUBURN PLEMON CHITTY**  
*Valdosta, Georgia*

Major: Biology      Minor: Chemistry  
Math Science Club 1, 2, 3, 4; Sigma Alpha Chi.

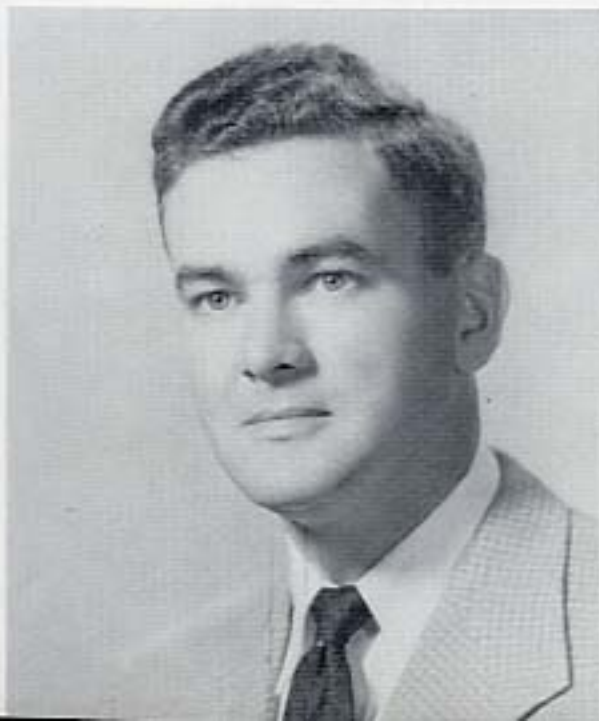


**PERSIS CLARK**  
*Valdosta, Georgia*

Major: Secretarial Science  
Transfer from Stetson University; Business Club  
Vice-Pres. 4; BSU; BSU Council 4.

. . . S E N I O R S

**EDWARD V. COYLE**  
*Quitman, Georgia*



**JO ANN DANIEL**  
*Montezuma, Georgia*

Major: Humanities (Speech Emphasis)  
Freshman Class Secretary; Freshman Class Sweetheart; Dance Club 1; Sock and Buskin 1, 2, 3, 4; Home Ec. 2; YWCA 1, 2; Y Cabinet 2; Wesley Foundation 1, 2, 3; Cheerleader 1; Sigma Alpha Omega 1, 2, 3; Filly Fortunae Pledge Sponsor 1; Sophomore Class Beauty; Miss VSC 2; Homecoming Queen 2.





**SHIRLEY DAUGHARTY**

*Fargo, Georgia*

Major: Secretarial Science



**EDWARD V. DEATON**

*Columbus, Georgia*

Major: Bus. Admn.      Minor: English  
Baseball 3, 4; V Club 3, 4, Vice-Pres. 4; Business  
Club 3; English Club 3, 4; Mu Alpha 3, 4, Treas-  
urer 3; Campus Canopy 3.

**S E N I O R S . . .**

**PATSY WRIGHT DEVANE**

*Valdosta, Georgia*

Major: Elementary Education

Transfer from Andrew College; Education Club 2,  
3, 4; Glee Club 2, 3; Sigma Alpha Chi 2, 3, 4.

**NORMA JEAN EWING**

*Ocilla, Georgia*

Major: Secretarial Science







**JACK GIDDENS**  
*Valdosta, Georgia*

Major: Business Administration  
IRC 2, 3, 4.



**URSULA WILLIS GOODSON**  
*Valdosta, Georgia*

Major: Secretarial Science  
Transfer from Flora McDonald College; Fins and  
Flippers 3; Business Club 4; English Club 4.

. . . S E N I O R S

**SEABORN J. GRAHAM**  
*Valdosta, Georgia*

**EWELL J. GRINER**  
*Valdosta, Georgia*

Major: History  
IRC 2, 4.

Minor: English





**RONNIE HAIRE**  
*Colquitt, Georgia*

Major: Chemistry      Minor: Math  
Math-Science 3, President 4; Photography Club  
President 4; Sigma Alpha Chi 3, 4; Who's Who in  
American Colleges and Universities; Vice-President  
Senior Class.



**CHARLIE HANCOCK**  
*Valdosta, Georgia*

**S E N I O R S . . .**

**PAT HARDEN**  
*Ashburn, Georgia*

Major: Secondary Ed.      Minor: Social Science  
Glee Club 1, 2; Education Club 2, 3, 4, Secretary 4;  
WRHC Secretary 4; YWCA 1, 2, 3, 4; Y Cabinet 4;  
Wesley Foundation 2.

**JEAN HARRELL**  
*Valdosta, Georgia*

Major: Secretarial Science  
English Club President 4; Business Club.







**MRS. INEZ D. HENDLEY**  
*Nashville, Georgia*

Major: Elementary Education  
Education Club 4.



**ROBERT HERRINGTON**  
*Valdosta, Georgia*

. . . S E N I O R S

**TRAVIS HIGGINBOTHAM**  
*Valdosta, Georgia*

Major: Bus. Admn.      Minor: History  
Freshman Marka; Business Club 1, Treasurer 2, 3,  
4; Fili Fortuna 1, 2, 3, 4; Senior Class President 4.

**LUCIA ANNE HORNE**  
*Doerun, Georgia*

Major: Secondary Education (English)  
Dance Club 1; Business Club 1; Fins and Flippers  
1, 2, 3; Glee Club 3; Sports Club 1, 2; Education  
Club 3, 4.





**WILLIAM EDWARDS JACKSON**  
*Sylvester, Georgia*

**Major: English**

SGA 1, 2, 3, 4, Treasurer 3, President 4; Sophomore Class Vice-Pres.; Junior Class President; Mu Alpha 1, 2, 3, 4, Treasurer 2, President 3, 4; Dance Club 1, 2, 3; Sock and Buskin Club 3, 4; English Club 3, 4; Circle K 3, 4, Board of Directors 4; Campus Canopy 2, Feature Editor 3; Who's Who in American Colleges and Universities 4; Men's Dormitory Council Treasurer 3.



**CAROLYN JONES**  
*Cairo, Georgia*

**Major: Secretarial Science      Minor: English**

Glee Club 1, 2; Wesley Foundation 1, 2, 3; Business Club 1, 2, 3, 4, Publicity Chairman 4; YWCA 1, 2, 3, 4; "Y" Cabine 4; English Club 3, 4, Vice-Pres. 4.

**S E N I O R S . . .**

**EMMA JONES**  
*Colquitt, Georgia*

**Major: Elementary Education**

YWCA; "Y" Cabinet; Glee Club; Sophomore Counselor.

**WILLIAM L. JOHNSON**  
*Morgan, Georgia*

**Major: Biology**

**Minor: History**

Math-Science Club; English Club.







**LEVON KING**  
*Screen, Georgia*  
Major: Humanities (Speech Emphasis)



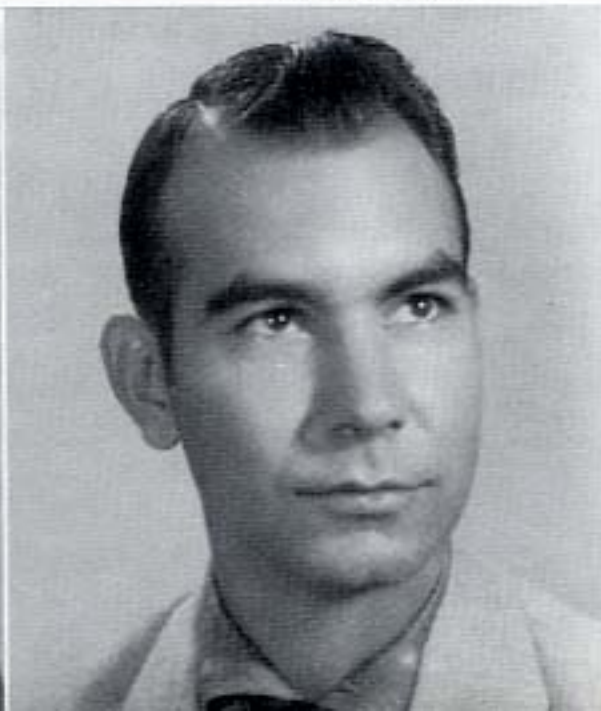
**JOEL DONALD LEE**  
*Homerille, Georgia*  
Major: Bus. Admn.      Minor: History

. . . S E N I O R S

**RONALD L. LITTLE**  
*Lyons, Georgia*



**JAMES HIRAM MANCIL**  
*Lakeland, Georgia*





**JAMES NOEL MARTIN**

*Coolidge, Georgia*

Major: Bus. Admn. Minor: History  
Sock and Buskin Club 1, 2; V Club 3, 4; Basketball 3.



**FRANCES GARBUTT MAUGHON**

*Valdosta, Georgia*

Major: Secretarial Science Minor: English  
Business Club President 4; Dance Club Stage Manager 2, Vice-Pres. 3; Sigma Alpha Chi 1, 2, 3, 4; Cheerleader 1, 2, Co-captain 2; Pine Cone Staff 1; Campus Canopy Staff 1; Who's Who in American Colleges and Universities 4.

**S E N I O R S . . .**

**WAYNE MATTHEW McCULLERS**

*Hahira, Georgia*

Major: History Minor: English  
IRC 2, 3, 4, Vice-Pres. 3, President 4; Sock and Buskin Club 1, 2, 3, 4, Secretary-Treasurer 2, 3; Circle K 3, 4, Board of Directors 4; Math-Science 1; Sigma Alpha Chi; Campus Canopy 1, 3; Pine Cone 2, 3, 4, Editor 4.

**ROBERT McELVEY**

*Valdosta, Georgia*

Mu Alpha 1, 2; Basketball 1, 2; Baseball 1, 2, 4; V Club 4, President 4.





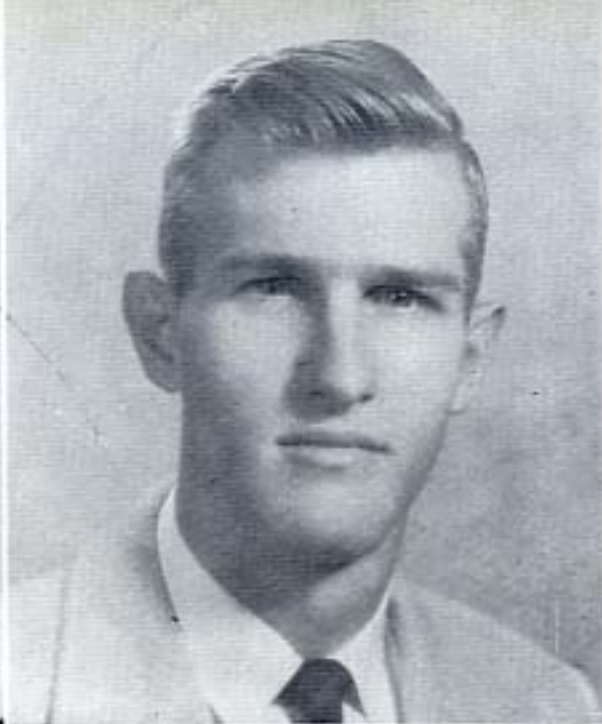


**ROSALIE McLAURIN**

*Statesville, Georgia*

Major: Secondary Education (English)

Education Club 1, 2, 3, 4; English Club 1, 2, 3, 4.



**TOMMY OSCAR MORGAN**

*Valdosta, Georgia*

Dance Club.

. . . S E N I O R S

**CORA JEAN NORMAN**

*Moultrie, Georgia*

Major: Secondary Education Minor: English

BSU 1, 2, 3, 4, Devotional Vice-Pres. 2; Education Club 1, 2, 3, 4, Treasurer 2; YWCA 1, 2, 3, 4, Vice-Pres. 3, President 4; English Club 3, 4; Who's Who in American Colleges and Universities.

**TRAVIS JAMES OUTZ, JR.**

*Valdosta, Georgia*

Major: Secondary English

Education Club: Transfer from South Georgia College.





**JESSLYN PARKER**  
*Abberville, Georgia*

Major: Voice

Serenaders 1, 2, 3, 4; Glee Club 1, 2, 4, President 2;  
BSU 1, 2, 3, 4; Council 2, 3, 4; YWCA 1, 2, 3, 4;  
"Y" Cabinet 1, 2, 3, 4; Sports Club 1.



**LORENZO PRICE**  
*Valdosta, Georgia*

**S E N I O R S . . .**

**MARGARET MAY RAGIN**  
*Coolidge, Georgia*

Major: Sec'dary Ed. (Math) Minor: English  
Math-Science Club 1, 2, 3, 4; Education Club 3, 4;  
English Club 3, 4; Sports Club 1, 2, 3, 4; Council  
2, 3, 4, Secretary 3, Treasurer 4; BSU 1, 2; YWCA  
1, 2, 3, 4.

**NELL ROGERS**  
*Valdosta, Georgia*

Major: Elementary Education  
Transfer from Stenson University; Glee Club 1, 2,  
4; Serenaders 2; BSU 1, 2, 3, 4; Council 2, 3, Pres-  
ident 3; YWCA 2, 3, 4; Council 3, 4; Education  
Club 2, 3, 4.







**MARGARET B. SCAFF**

*Waycross, Georgia*

Major: Elementary Education

Education Club 1, 2, 3, 4.



**JOHN CHARLES SHEFFIELD**

*Moultrie, Georgia*

. . . S E N I O R S

**AMANDA SHEFFIELD**

*Blakely, Georgia*

Major: Secretarial Science      Minor: History

Transfer from Middle Georgia College; Sports Club 3, 4; Sports Council 3, 4, Secretary 4; Sigma Alpha Chi 3, 4; Business Club 3, 4, Treasurer 4; BSU 3, 4, Secretary 4; IRC 3, 4.

**CHARLES SKIPPER**

*Valdosta, Georgia*





**MARGIE LEE SMITH**  
*Abbeville, Georgia*

**Major: Biology**      **Minor: Social Work**  
Math-Science Club 1, 2, 3, 4; Home Ec. 1, 2, Vice-Pres. 2; Sigma Alpha Chi 1, 2, 3, Secretary 3; Sports Club 1, 2, 3, 4; Council 3, 4, Vice-Pres. 4; YWCA 1, 2, 3, 4; Cabinet 3, 4, Secretary 4; BSU 1, 2; Sock and Buskin Club 2, 3, 4, Vice-Pres. 3; Secretary of Senior Class; WRHC 4.



**VIRGINA ADELLE SMITH**  
*Quitman, Georgia*

**Major: Secretarial Science**      **Minor: English**  
Sigma Alpha Chi 1, 2, 3, 4, President 4; Business Club 1, 2, 3, 4, Secretary 2; Sports Club 1, 2, 3, 4; Council 4; YWCA 1, 2, 3, 4; Cabinet 2, 3, 4; SGA 4; Six Ep Hostess 4.

**S E N I O R S . . .**

**WILLIAM T. SMITH**  
*Valdosta, Georgia*



**BETTY KAY SPRINGER**  
*Valdosta, Georgia*







**RAY STALLINGS**  
*Valdosta, Georgia*



**NANCY JANE STARLING**  
*Tallahassee, Florida*

**Major:** Biology      **Minors:** Chemistry  
and English  
Sports Club 1, 2, 3, 4; Council 1, 2, 3, 4, Treasurer  
2, Vice-Pres. 3, President 4; Fins and Flippers 3;  
Math-Science Club 1, 2, 3, 4; Glee Club 1, 2; Sigma  
Alpha Chi 1, 2, 3, 4; WRHC 3, Vice-Pres. 3; YWCA  
1, 2, 3, 4; Chapel Choir 2; "Y" Cabinet 2; Zeta Chi  
3, 4, Pledge President 3; Sigma Epsilon Sweetheart  
4.

. . . **S E N I O R S**

**RAYMOND L. TAYLOR**  
*Valdosta, Georgia*

**ELIZABETH WALTMAN**  
*Jacksonville, Florida*

**Major:** Social Work      **Minor:** History  
Glee Club 2, 3, 4, President 3; Sports Club 2, 3, 4;  
Council 2, 3, 4; Pine Cone 2, 3, Assistant Editor 3;  
Campus Canopy 2, 3; Math-Science Club 2, 3; Sock  
and Buskin 2, 3; Education Club 3; SGA 3, Treas-  
urer 4; Editor V Book 4.





**MARY OLLIE WARD**  
*Iron City, Georgia*

Major: Secondary Ed. (Eng.) Minor: History  
Education Club 2, 3, 4; Sock and Buskin 2, 3; IRC  
4; English Club 4; YWCA 2, 3 Treasurer of Senior  
Class.



**FRANK WELCH**  
*Moultrie, Georgia*

**S E N I O R S . . .**

**GEORGE F. WHEELER**  
*Valdosta, Georgia*



**ALMA JO WILLIAMS**  
*Valdosta, Georgia*

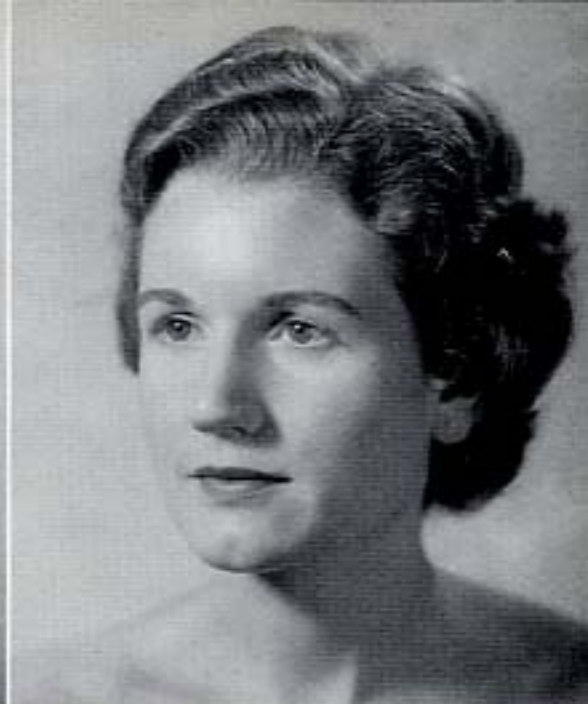
Major: Elementary Education  
Sports Club 1, 2, 3 Council 2, 3; Education Club  
1, 2, 3, 4, Vice-Pres. 3; Sock and Buskin Club 1, 2,  
3, 4, President 3; Campus Canopy 2, 3, Feature  
Editor 3; Mu Alpha Sponsor 3; Secretary of Junior  
Class.







**JULIA ANN WILLIAMS**  
*Valdosta, Georgia*



**RETHA WILLIS**  
*Albany, Georgia*

**Major: Education**

YWCA; "Y" Cabinet; Education Club, President 4; Secretary Junior Class; Sock and Buskin Club 3; Pine Cone Staff 3; Wesley Foundation.

**GEORGIA NEAL WOLFE**  
*Albany, Georgia*

**Major: Secondary Ed. (Math., Soc. Science)**

Zeet Chi 2, 3, President 3; SGA Secretary 3; Filii Fortunae Sponsor 3; Sigma Alpha Chi 1, 2, 3, Vice-Pres. 3; Wesley Foundation 1, 2, 3, President 3; YWCA 1, 2, 3 Treasurer 3; Cabinet 2, 3; Education Club 2, 3, Vice-Pres. 3; Cheerleader 1; Freshman Math Award; Glee Club 1; Dormitory Council 1; Pine Cone Staff 1; Math-Science Club 1; Sock and Buskin Club 1; Sophomore Class Vice-Pres. 2; Who's Who in American Colleges and Universities.

**ROYAL DENSON WOOD**  
*Tifton, Georgia*

Transfer from Emory-at-Oxford; SGA 3, Vice-Pres., President 4; Sigma Epsilon Fraternity 2, President 3, 4; YMCA 2, 3, President 4; Math-Science Club 2, 3, Vice-Pres. 4; Dance Club 4; English Club 4; IRC 4; Glee Club 2, 3; Circle K 2, 3, Board of Directors 4; Who's Who in American Colleges and Universities.

. . . S E N I O R S





IRA DENT  
*Vice-President*

RETHA WILLIS  
*Secretary*

JACKIE GEIGER  
*Treasurer*

EMA DELL HENDLEY  
*President*

THIS IS THE CLASS OF

1958

## THE JUNIORS

Andrew Abbott

Chaldon Ahmed Abdulah

Dottie Alford

Ronald Allen

Asim Hashim Azzam







Sam Bailey

Bennie Baker

Elaine Barber

Ruby Baxter

Jo Beam

Carolyn Blackledge

Allen Booker

Johnnie Mae Brannon

Doris Bridges

Sue Bridges

Sheldon Broomberg

Betty Lou Brown

Thelma Bruce

Claire Buchannan

Betty Jane Chambliss

Bobby Coleman

Jeanne Connell

Lloyd Cowart

Jeanne Davis

Louis Davis

. . . J U N I O R S



Elizabeth Dean  
 Jean Edwards  
 Jackie Geiger  
 Katherine Haeckle

Margie Dechau  
 William Ellis  
 Noel George  
 Hoyt Harrell

Ira Dent  
 Naomi Forte  
 Eugene Gibbs  
 Emm Dell Hendley

Wayne Dickson  
 Carl Free  
 Lawton Greene  
 Mary Ann Hogg

Alton Dupree  
 Ed Gamble  
 Charlene Griffith  
 Carolyn Holton

J U N I O R S . . .





Stanley Houston  
 Jan Lanier  
 Freddie McLean  
 Pat O'Brien

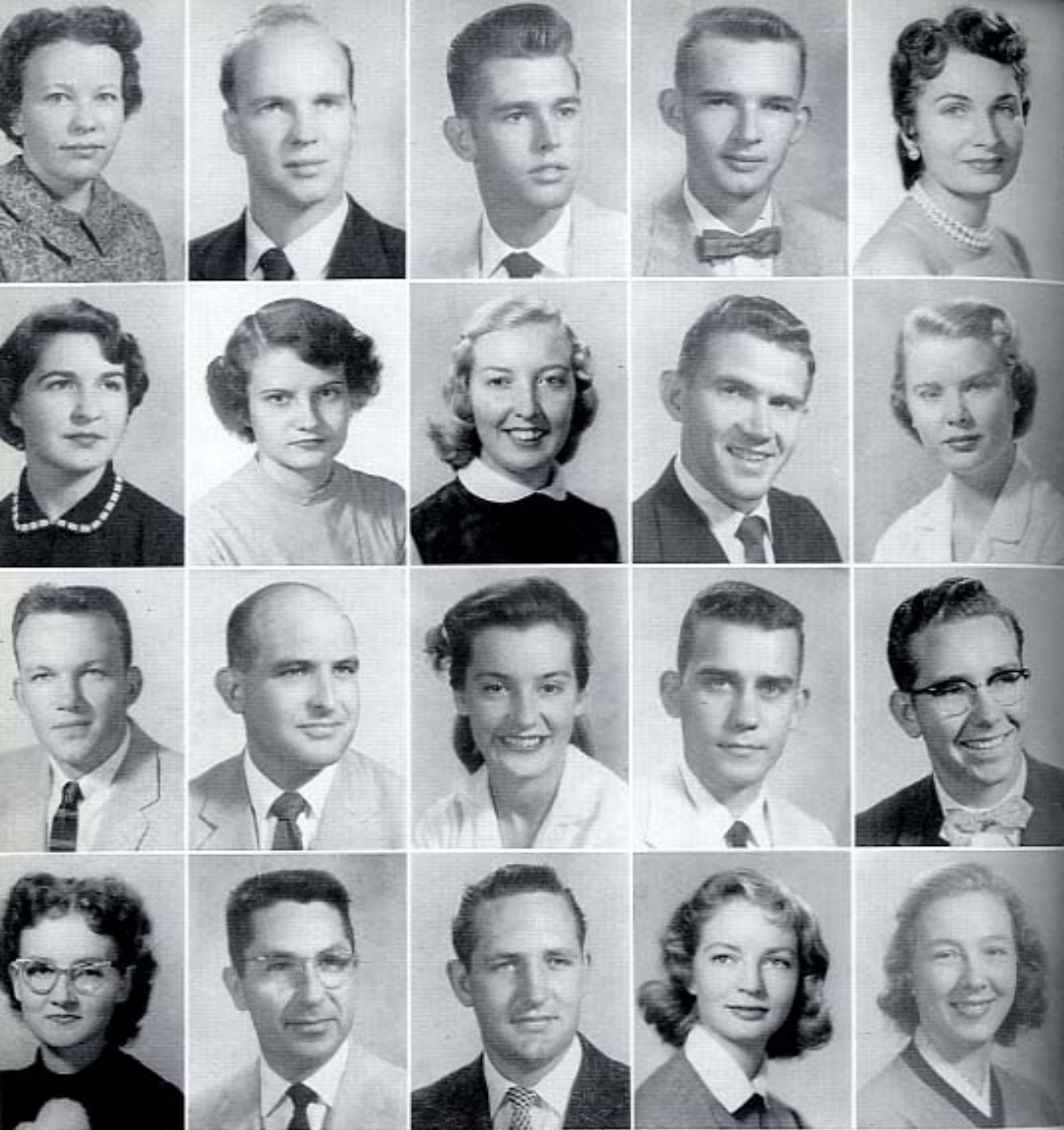
A. J. Jarvis  
 James Lastinger  
 William Morgan  
 Leif Onarheim

Betty Jones  
 Lindsey Mason  
 Joan Nastasi  
 Grace Ott

Roy Jump  
 Larry Massey  
 LeNodra Nesmith  
 Buck Pafford

Carol Keene  
 Bobbie McKinnon  
 Charles Norton  
 Marshu Paulk

. . . J U N I O R S



Peggy Perkins  
Della Raulerson  
John Sheffield  
Nancy Southwell

Joe Potterfield  
Leona Register  
Mel Smith  
Murray Steward

Johnny Purvis  
Mary Ann Richardson  
Patsy Smith  
Jim Stovall

Glenn Putnal  
Jack Rowe  
Tom Smith  
Virginia Sweet

Lillie Mae Ragsdill  
Jane Rowe  
Billy Southerland  
Marion Thomas

J U N I O R S . . .





Edith Tisdale  
Shirley Wilson

Marcia Walters  
Lee Yarbrough

Rose Marie Weyer  
Tom Young

Fred Wilkerson  
Carl Duren

Raymond Wilson  
Hugh Stephenson

. . . J U N I O R S

"Play Production"





The Soph Class Officers at an executive meeting . . .

*THE CLASS OF '59*

**SOPHOMORES**

June Baggs

Wynette Baker

Jim Barrs

Vann Bensley

Elton Belch

Gady Bennett







A. J. Bentley	Bobby Bridges	Jean Bridges	Evelyn Brown	Jimmy Burnett	Paula Butler
David Byless	Horace Chitty	Edna Carter	Mary Ann Carter	William Carter	Lamar Cason
Marjorie Casleberry	John Corbitt	Eva Crump	Charles Dasher	Willena Daugherty	Davis
Denny Denman	Jim DeVane	Gloria Dickinson	Virginia Donaldson	Ben Duque	Don Duren

. . . S O P H O M O R E S

# S O P H O M O R E S . . .

Glenda Ellis

Joyce F. Fields

Wayne Fowler

Ann Giddens

Bill Giddens

Gloria Gill

Walter Godwin

Gaye Griffis

Jim Hathaway

Jack Hawthorne

Lucille Helms

Ashley Hill

Odd Haugen

Jim Holt

Gail Houston

Ruth James

Billy Frank Kent

JoAnn Key

Billy King

Joyce Ledbetter

Linda Lee

Laura Leonard

Norma Lightsey

Susie Lindstrom







Ah . . . Monday Morning!

. . . S O P H O M O R E S

Don Lyons	Fred McDonald	Norma Mathews	Jimmy Maxwell	James May	Marilyn Miller
Bill Moncrieff	Billy Moncrieff	Jackie Moore	Bobby Musselwhite	Sandy Neal	Mary Jo Norman
	Helen Nussham	Molly Oden	Sally O'Neal	George Peagler	





Alice Perry

William T. Perry

Catherine Pitts

Helen Porter

Doyle Price

Cynthia Rice

Robert Sabo

Sampson

Tom Sawyer

Bill Sears

Sid Shaw

Helen Sherrod

Dewaine Skiles

Myrtice Sloan

Weldon Sloan

Jerry Smith

Jerry Smith

Joe Smith

Darlene Sproull

Ann Stalvey

Country Strickland

Ann Strickland

James R. Studstill

John Studstill

*S O P H O M O R E S . . .*



. . . S O P H O M O R E S

Frank Studstill  
Janet Vaughn  
William Watson  
Gene Wynne

Marilyn Sumner  
Shelby Vaughn  
Dixie Weger  
Fain Yates

Joe Tarpley  
Jimmy Walker  
Mildred Wetherington  
Frances Zant

Nancy Thorpe  
George Wallace  
Patsy White  
Richard Zell

Mawrren Tillman  
Buster Wasden  
Joe Wilson  
Robert Zell

Gail Voight  
Lewis Washington  
Ben Wood  
Janet Zipperer



FRESHMAN CLASS  
OFFICERS

*Left to right—*

SHIRLEY McGOWAN  
SMOKEY BRINSON  
MARILUCY HENDERSON  
ROY WETHERINGTON  
GENE CARGILE  
WAYNE ADKINS



THIS IS THE CLASS OF

1960

FRESHMEN

Wayne Adkins  
Donald Belcher

Tom Alderman  
Kathryn Bell

Wayne Allen  
Folks Bennett

Irwyn Aronson  
Joyce Beverly

John Ashe  
Lawrence Bishop

Huey Baker  
Lillie Mae Black

John Baskin  
James Blair





. . . F R E S H M E N

Betty Bland  
 Eady Bullington  
 Karen Clements  
 Riley DeLoach  
 Pattie Edwards

Pat Boyko  
 Gene Cargile  
 Glennie Cooper  
 Donald Dial  
 Barbara Evans

Richard Bragg  
 Michael Carnehan  
 Robert Coppedge  
 Kay James  
 Kenneth Ferrell

Smokey Brinson  
 Jack Carter  
 Judy Crenshaw  
 Elaine Duckett  
 Ben Force

Jimmy Bronson  
 Sundra Champion  
 Jean Culpepper  
 Gerald Dulaney  
 Janice Forte

Marjorie Brooks  
 Susan Chunce  
 Edmee Durley  
 Carol Durrance  
 Edward Fountain

Deany Buford  
 Jerome Clegg  
 Frank Daughtry  
 Bill Drury  
 Janet Fowler



Gerald Garrett  
 Paul Garrett  
 Huey Gaskins  
 Jacqueline Gaskins  
 Margaret Holmes



Freshmen having the time of their life . . . Rat Court, 1957

F R E S H M E N . . .

Dorothy Gaskins  
 Annie Hamm

Bill Griffis  
 Russell Horner

Junice Griffin  
 Jean Harrell

Audrey Griner  
 Janet Harrison

Shirley Grieshaber  
 Patricia Hortman

Jimmy Gerlos  
 Billy Hayes





. . . F R E S H M E N

Lester Haymons  
Bennie James  
Houston Kemper  
Mary Lines  
Roselia McCall

JoAnn Hand  
Frances Johnson  
Ann King  
Jimmy Linberger  
Janice McCranie

Lucy Henderson  
James Johnson  
Mary King  
Frances Little  
Herman McDonald

Ann Hill  
Francine Jones  
Patsy Langford  
Franklin Lodge  
Shirley McGowan

Billy Hughes  
Sona Jo Joyce  
Marcia Lastinger  
Stanley Lynds  
Betty McLauren

Dewey Hulsey  
Virginia Joyce  
Stella Ann Lee  
Guy Maddox  
Terry Meeks

Carl Ivey  
Kekey Kemp  
Jimmy Lewis  
Johnny Malone  
Beverly Monroe



# FRESHMEN . . .

Leland Moore	Mary Morgan	Mavis Morris	Barbara Musie	Carolyn Outlaw	Calvin Pafford	Gail Parrish
Joe Patterson	Barbara Peace	Mary Maddox	Charles Pittman	Charles Powell	Janet Pruitte	Jo Ann Rabun
Don Grover	Jeanie Rodgers	Ann Rouse	Frank Rouse	Patricia Rowan	Ann Saunders	Jan Scruggs
Barbara Seagraves	Anne Sells	Errol Sewell	Sue Sheffield	Mike Smith	Gloria Starling	Mary Stokes
Mary Stone	Jean Strickland	Sarah Strickland	Stuart Summerford	Peggy Trotman	Linda Trulock	Sybil Tucker





. . . F R E S H M E N

Betty Ann Turner  
Sona Wheeler  
Bernard Willaford  
Jack Wright

Gail Wachtel  
Ellen Whipple  
Paul Williams  
Bill Yarian

Jim Wainwright  
Carol Whitehead  
Sonja Williams  
Richard Yule

Earl Wallace  
Jim Wiggins  
Dorcas Wisenbaker  
Helen Ziegler

Sandra Warren  
Joe Wiggs  
Peggy Wolfe  
Billy Moore

Betty Ann Webb Roy Wetherington  
Buddy Wilburn Jean Wilkins  
Becky Wood Janet Woodall  
Hans Heinrich





Oh, Rats!



The long arm of the law is catching Rats!



Mr. Pember  
at work



Signing the  
Proclamation



Art Exhibit



THESE ARE THE

1957

# Activities

AT  
VALDOSTA STATE





# THE STUDENT GOVERNMENT ASSOCIATION

*"Governing Relations  
Between Students  
and Faculty"*

## OFFICERS

**BILL JACKSON**

*President*

**ELIZABETH WALTMAN**

*Treasurer*

**GEORGIA WOLFE**

*Secretary*

**DENSON WOOD**

*Vice-President*

We represent the Student Body. We, as the student governing group on campus, cooperate with the administration in making and carrying out our rules and regulations.

*Standing: Bobby Coleman, Mr. Jack McGraw, Raymond Wilson.*

*Sitting: Jeanne Davis, Mrs. Wisenbaker, Marsha Paulk.*



"WE STRIVE TOWARD A  
MORE ORDERLY AND  
UNITED VALDOSTA  
STATE COLLEGE."

*Standing: Jack Carter, Ben Wood  
and Wayne Adkins.*

*Sitting: Virginia Smith, Thelma  
Bruce, Molly Oden, Lucy  
Henderson.*



*Left to right:*  
GAIL HOUSTON  
MARGIE SMITH  
*Activities Chmn.*

EMA DELL  
HENDLEY  
JEANNE DAVIS  
*1st Vice-President*

MERLE BAKER  
*President*

PAT HARDEN  
*Sec.-Treas.*

SHIRLEY  
DAUGHARTY  
*2nd Vice-President*



## WOMAN'S RESIDENCE HALL COUNCIL DORMITORY COUNCIL

*"The purpose of the Residence Hall Council is to regulate the dormitory student's life for the good of the majority."*

It strives to develop not only a sense of honesty but a sense of responsibility in each student; to encourage and provide opportunities for the development of leadership among students; and to promote a practical government that will carry over into democratic life.



*Left to right:*  
JIMMY STOVALL  
*Vice-President*

BUSTER WARDEN  
*Sec.-Treas.*

ALLEN BROOKS  
*President*

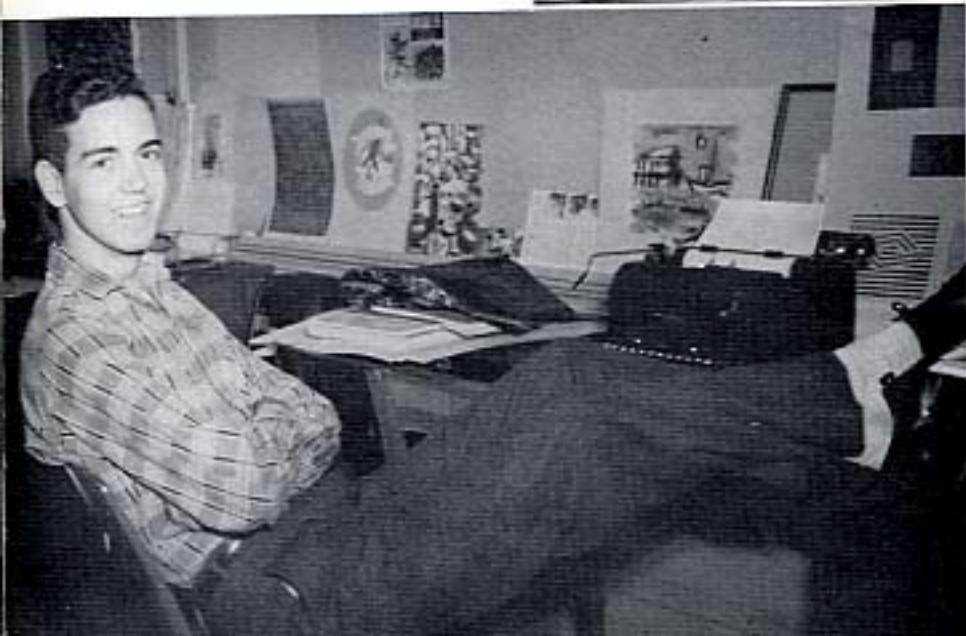


THIS IS THE

# PINE

WAYNE McCULLERS  
*Editor*

EMA DELL HENDLEY and  
JACKIE GEIGER  
*Associate Editors*



RAYMOND WILSON  
*Business Manager*



1957

# C O N E

## LAYOUT STAFF

JOHNNY CORBETT  
CAROLYN BLACKLEDGE  
ELIZABETH DEAN



## PHOTOGRAPHY STAFF

JEANNE DAVIS  
BETTY LOU BROWN  
RONNIE HAIRE  
MURRAY STEWARD

"Working on pics—  
which ones to use?"



# CAMPUS CANOPY

*"Covering the Daily Life of Valdosta State"*



FRED McDONALD, *Editor*

The daily life of a Valdosta State student is covered by the publication of the Campus Canopy. From the start of the year to the end, all the big moments—all are faithfully recorded in the pages of the Canopy.

*"Working to Beat the Deadline!"*





# THE CAMERA CLUB

*"Shutterbugs Running Wild Over Campus"*

Though the Camera Club is the youngest club on campus—being organized just this year—it is still an active organization. Examples of the work of the club graces these pages. Enthusiasm is strong, and the Club is looking forward to many happy and successful years

## MEMBERS

Ben Duque, Della Raulerson, Mel Smith, Murray Steward, Jimmy Stovall, Jack Rowe,  
Ronnie Haire, Dr. Wall, Doyle Price.





THE "Y" CABINET

## Y W C A

*"The Young Woman's Christian Association helps to create a religious atmosphere on the college campus."*

Every girl is given the opportunity to join this organization and many take advantage of it. The "Y" Cabinet furnishes leadership and guidance to help with the girls' daily problems. The traditional services sponsored by the "Y" are:

- Big Sister-Little Sister Candle-Lighting Service,
- Compline,
- The Fire-Lighting Service,
- The Hanging of the Green,
- The Week of the Heart Sister.

This club is made one of the most active and popular ones on campus by such influence.



# MEN'S CHRISTIAN ASSOCIATION

*"The M. C. A. tries to bring to the male student body a closer awareness of God."*

## OFFICERS

BEN WOOD, *President*

RAYMOND WILSON, *Vice-President*

ALLEN BROOKS, *Secretary*

LESTER HAYMONDS, *Treasurer*

The club tries to show that fellowship with our fellow man and God at the same time can be the most enjoyable prospect of campus life.

The M. C. A. co-sponsors Vespers, Morning

Watch and deputation committees with the Y. W. C. A. They also conduct "Cell Meetings," nightly devotions, in the men's dormitory.

*Left to right, standing: Frank Rouse, Raymond Wilson, Ben Wood, Ira Dent, Jimmy Gerlock, Johnny Corbitt, Ronnie Haire. Seated: Stuart Summerford, Allen Brooks, Denson Wood, Vann Beasley, Lester Haymons.*





## THE WESLEY FOUNDATION

*"Promotes religious life on campus for Methodist students."*

The Wesley Foundation strives to bring together the college students who are members of the Methodist Church or who are associated with this church.

It encourages participation in the activities of the church and tries to bring the students closer together through this work and worship.



# BAPTIST STUDENT UNION

*"The Baptist Student Union strives to enrich Baptist student life on campus."*

The Baptist Student Union serves as a link between the student's church at home and his religious life at school. It seeks to aid the student in his search for peace of mind and soul and it endeavors to establish a more satisfying Christian atmosphere

on the campus. The students who support the Baptist Student Union are encouraged to dedicate their time and talents to the advancement of Christ's kingdom on earth.





## THE BUSINESS CLUB

*"A club for Secretarial Science and Business Administration majors and minors."*

### OFFICERS

FRANCES B. MAUGHON, *President*

PERSIS CLARK, *Vice-President*

HELEN PORTER, *Secretary*

AMANDA SHEFFIELD, *Treasurer*

MISS SAMMONS, MR. DALES, *Advisors*

The club gives experience to its members for serving the faculty and student body and for work in the future. The purposes of this club are to pro-

mote interest in business education and training among its members and to provide social, cultural, and business experiences through club activities.



# ENGLISH CLUB

*"Stimulates interest in all phases of literature."*

The English Club works to stimulate an interest in all phases of literature and to promote creativeness in the students. The English Club is composed of all Juniors and Seniors who major or minor in English.

## OFFICERS

JEAN HARRELL, *President*

CAROLYN JONES, *Vice-President*

NORMA LIGHTSEY, *Secretary and Treasurer*

ELAINE BARBER, *Reporter*

MARGARET RAGAN, *Social Chairman*

MRS. ODUM, *Advisor*





Secondary and  
Junior High  
Education Majors

## THE EDUCATION CLUB

*"A club concerned with the advancement of education."*

Our purpose is brought forth through club projects, educational talks, and films. Education is our

chosen field, and we feel that we could not have chosen a more rewarding and worthwhile one.

Elementary  
Education  
Majors







## THE MATH-SCIENCE CLUB

*"An organization made up principally of majors or minors in Mathematics, Biology, and Chemistry."*

The Math-Science Club purposes to foster and cultivate a lively interest in the wonders of the

physical world about us as viewed through the eyes of intelligent inquiry and mathematical logic.





## THE DANCE CLUB

*"A toe-tapping, light-hearted club."*

Ah, to dance is to really live. To dance is to live anew, to express with movement that which cannot be expressed with words. By dance we do not mean just the waltz or rumba, we mean them all.







- OFFICERS**  
**WAYNE McCULLERS**  
*President*  
**MERLE BAKER**  
*Vice-President*  
**JO BEAM**  
*Secretary*  
**GEORGE WALLACE**  
*Treasurer*  
**ODD HAUGEN**  
*Member-at-Large*

## THE INTERNATIONAL RELATIONS CLUB

*"Devoted to a study of world affairs."*

This organization is sponsored by the Foreign Policy Association. The club endeavors to deal with all topics of national and international significance in an impartial manner, always endeavoring to search out and appreciate the truth of each situa-

tion under observation. An effort is made to develop a practical understanding of current happenings through various projects, conferences, and programs. The motto of this club is: "To ignore world problems to to ignore your own future."



# THE CIRCLE K CLUB

*"Circle K is an intricate part of campus life, offering to the college and community a goal of service."*

## OFFICERS

JOHN ROBERT COLEMAN, *President*

RAYMOND WILSON, *Vice-President*

ALLEN BROOKS, *Secretary*

WALTER BARTEE, *Treasurer*

In its third year, Circle K has put useful projects to work for the benefit of the entire student body. Sponsored by Kiwanis International the club has become a member of Circle K International.







## THE SOCK AND BUSKIN CLUB

*"Curtain Time!" This is the cry that brings out the best in us."*

The producing of the play is hard work, but we revel in the grease paint, the muffed lines and the many things that go into the production of a play. The applause of an audience is our only reward, but we love the lines on the program beginning: "The Sock and Buskin Club Presents . . ."

### OFFICERS

**SHIRLEY WILSON**  
*President*

**JOHN CORBETT**  
*Vice-President*

**JO ANN DANIEL**  
*Secretary*

**GERRY SMITH**  
*Treasurer*

A scene from  
"Time Out for Ginger"





## SERENADERS

*"Singing is their delight."*

The Serenaders is a double-mixed quartet composed of voice students selected from the Glee Club. Singing music with popular appeal, the group appears before educational, civic, military, radio and television audiences, presenting thirty to forty programs in Georgia and Florida each year. The members of Serenaders receive academic credit for their participation.

### MEMBERS OF THE SERENADERS

Jean Connell  
Jean Edwards  
Carol Keene  
Jesslyn Parker

Wayne Fowler  
Dwayne Skiles  
Buster Wasden  
John Baskins



# THE GLEE CLUB

*"Our Glee Club gains yearly in strength and numbers."*

We have been exceptionally active the past year, presenting concerts in Valdosta and surrounding cities. The highlights of the year were our presentation of Handel's "Messiah," and our Spring Tour. We were received in many of the major cities of Georgia with much enthusiasm. We have enjoyed much success, and our hopes of more and continued success are very bright.





#### OFFICERS

SUSIE LINDSTROM, *President*

SHIRLEY DAUGHARTY, *Vice-President*

GLORIA DICKENSON, *Secretary*

LUCILLE HELMS, *Treasurer*

Sisters

## SIGMA ALPHA OMEGA

*"The sorority was founded during the month of December, 1953."*

Sigma Alpha Omega was organized not to form cliques or to create an undemocratic atmosphere, but to aid its members in every way in maintaining high scholastic and social standards. It strives to promote a greater interest in the college and to give each member fuller and richer experiences during her college days.

Pledges





Members



## ZETA CHI

*"One of our youngest and strongest organizations."*

Since its organization in the Spring of 1955, Zeta Chi Sorority has grown rapidly and now takes its place among the outstanding organizations on campus. It has provided an even balance in the sorority life at V. S. C. Zeta Chi is a social organization to promote a well rounded campus life. Also, it stresses the academic side of college.



Pledge Class



# FILII FORTUNAE FRATERNITY

Sponsors

*"One of our oldest organizations."*

Filii Fortunae was founded in the spring quarter of 1951, and granted its charter in the fall quarter of 1951. The fraternity has played a major role in the progress of V. S. C. by sponsoring and promoting events both on campus and in the community. By doing this the brothers have well fulfilled its purpose of bringing fellowship and brotherhood to the members as well as improving the school spirit of the students. At present Filii is a colony of Pi Kappa Phi National Fraternity. The first step toward its ultimate goal of becoming a national chapter of this fine organization.



Officers

Members and Sponsors





# SIGMA EPSILON

The Sigma Epsilon Colony was organized as a colony of Sigma Phi Epsilon Fraternity in June of 1955. The purpose of the Sig Ep Colony is to provide a fraternal organization of ideal concepts and dedicated to the welfare of its membership. The brothers of this colony emphasize scholarship and an active social life. They provide various activities for the brothers and the student body at V. S. C.

## OFFICERS

**BOBBY COLEMAN**, *President*  
**GEORGE WALLACE**, *Vice-President*  
**CARL FREE**, *Secretary*  
**RAYMOND WILSON**, *Treasurer*  
**BILLY MONCRIEF**, *Historian*



## BROTHERS

**Grady Bennett**  
**Lavon King**  
**Billy King**  
**Buster Horton**  
**Fred Wilkinson**  
**Joe Tarpley**  
**Denson Wood**  
**Ashley Hill**



## PLEDGES

**Stuart Summerford**  
**William Moncrief**  
**Wayne Adkins**  
**Gene Cargill**  
**Wayne Allen**  
**Wayne McCullers**  
**Murray Steward**  
**Lester Haymons**  
**Richard Zell**



#### OFFICERS

**BILL JACKSON, President; JACK CARTER, Vice-President; JEROME CLEGG, Secretary and Treasurer; HOUSTAN KEMPER, Historian.**

**BROTHERS: Bill Jackson, Jack Carter, Gorman Joiner.**

**PLEDGES: Jerome Clegg, Ben Force, Kelsey Kemp, Houston Kemper.**

## MU ALPHA FRATERNITY



*"One of our three prospering fraternities on campus."*

**SHIRLEY McGOWAN**

*Sweetheart*

**ANN HILL  
CAROL KEENE  
GAIL HOUSTON**

*Sponsors*



# SIGMA ALPHA CHI

Eligibility for membership for Freshmen implies an average of "B" for the first two quarters of the Freshman year. Eligibility for upperclassmen is set up so that a student must maintain an average of "B" and have outstanding qualities of leadership and character. The purpose of this organization is to encourage scholarship and stimulate interest in academic activities.





## THE LETTERMAN'S CLUB

*"A club for young athletes."*

A letterman's club was established on the V. S. C. campus for the first time last year. To qualify for the Letterman's Club, a person must win a varsity letter in baseball or basketball. The purpose of this club is to increase interest in varsity sports on the campus.





THESE ARE THE

1957

# Sports

AT  
VALDOSTA STATE

*an important part of the picture*

## OFFICERS

NAN STARLING, *President*  
MARGIE SMITH, *Vice-President*  
AMANDA SHEFFIELD, *Secretary*  
MARGARET RAGIN, *Treasurer*

## COUNCIL MEMBERS

Nan Starling	Dottie Alford
Margie Smith	Elaine Barber
Amanda Sheffield	Sue Bridges
Margaret Ragin	Carol Keene
Elizabeth Waltman	Wynette Baker



# WOMEN'S RECREATION ASSOCIATION

*"To bring to campus pleasure and enjoyment through sports."*

On our campus, there is always competition between two teams—the Kappas and the Lambdas. It is a friendly rivalry but never let it be said that one team is better than the other; they are both tops. These two teams make up the "Rec" Club, and each girl is invited to become either a Kappa or

a Lambda. Our Physical Education Department advises us and supplies the equipment with which we try to bring to the campus pleasure and enjoyment through sports. All this leads to healthful living and helps to make a well rounded college student.

**CLUB MEMBERS:** Anyone attending sports practice.



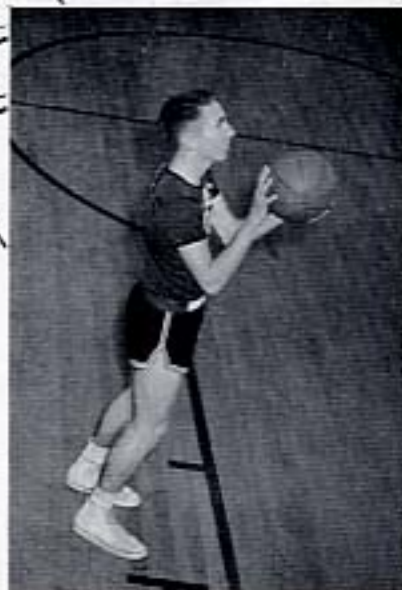


# FINS AND FLIPPERS

*"Synchronized swimming at its best."*



REBELS



EDWARD ELLIS

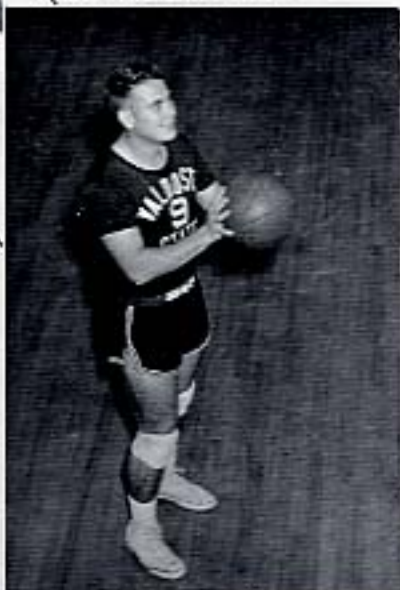


JIMMY HATHAWAY



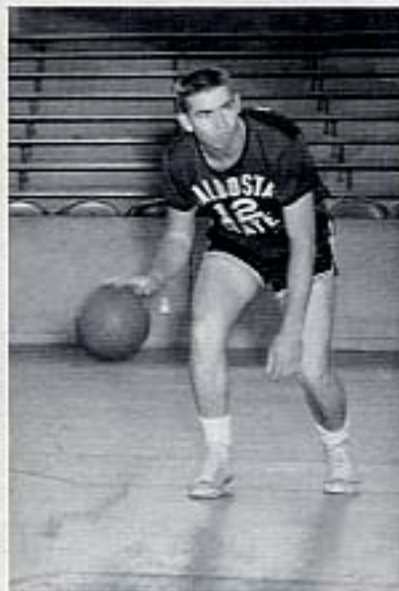
HOYT HARRELL

WALTER BARTEE

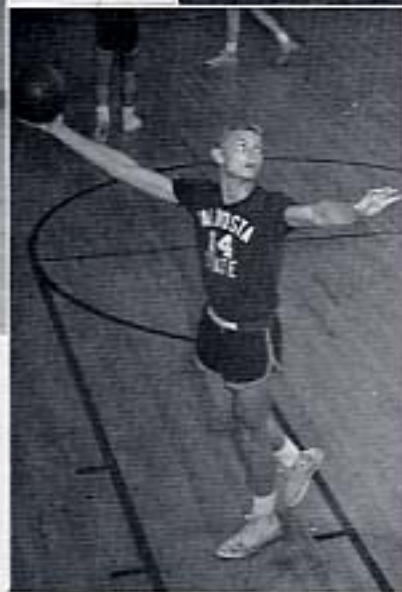


THE  
REBELS

A. J. JARVIS



JOHNNY PURVIS

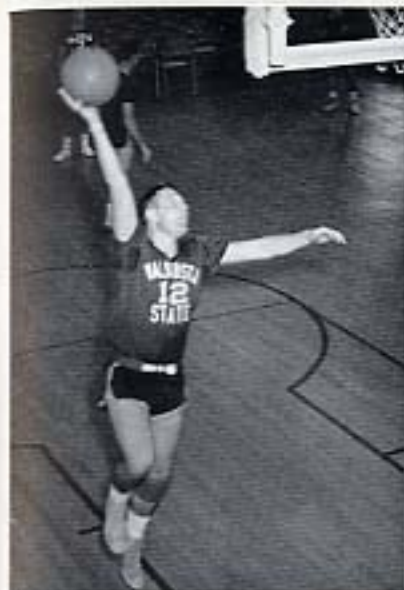


GENE CARGILE



15

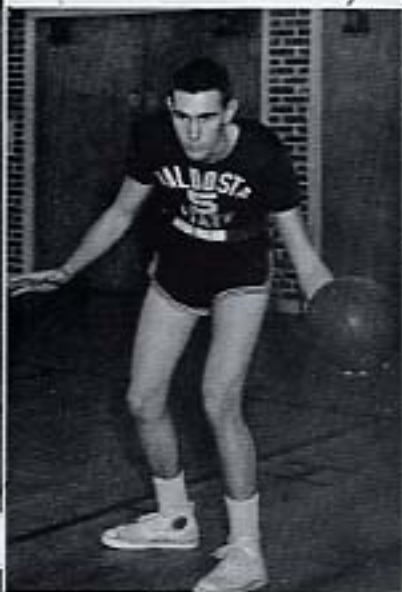




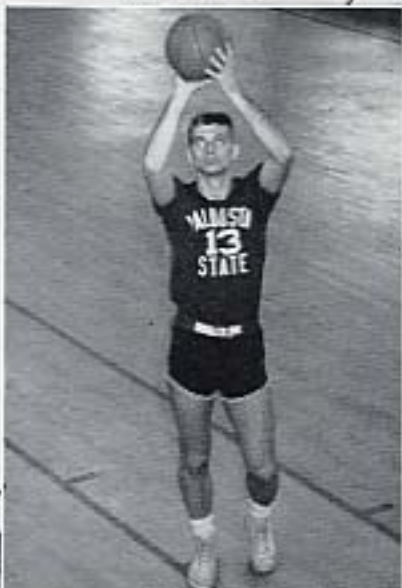
JIMMY STOVALL



JACK ROWE



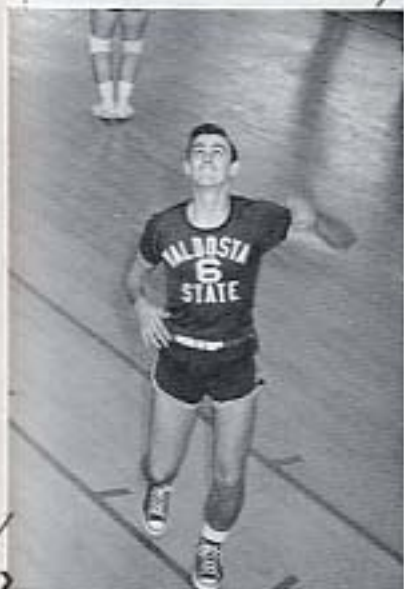
BEN WOOD



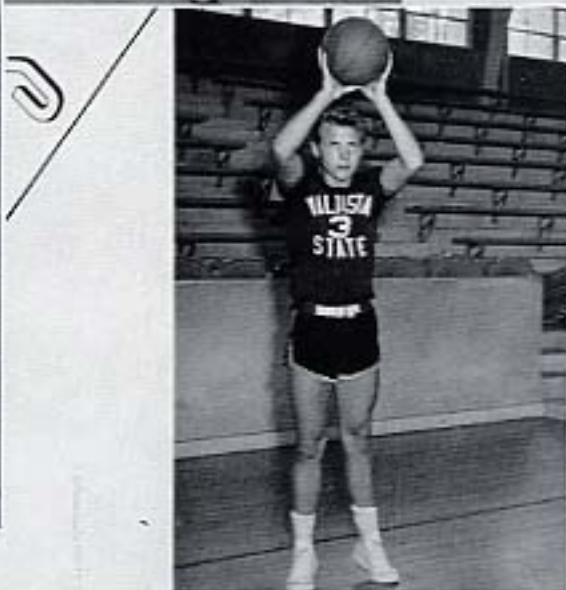
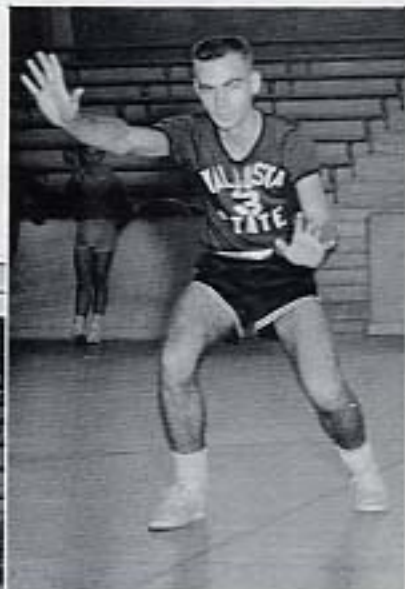
GEORGE PEAGLER

PRIDE  
OF  
VALDOSTA  
STATE

DWAINE SKILES



VANN BEASLEY



GENE WYNNE

CLS. RT

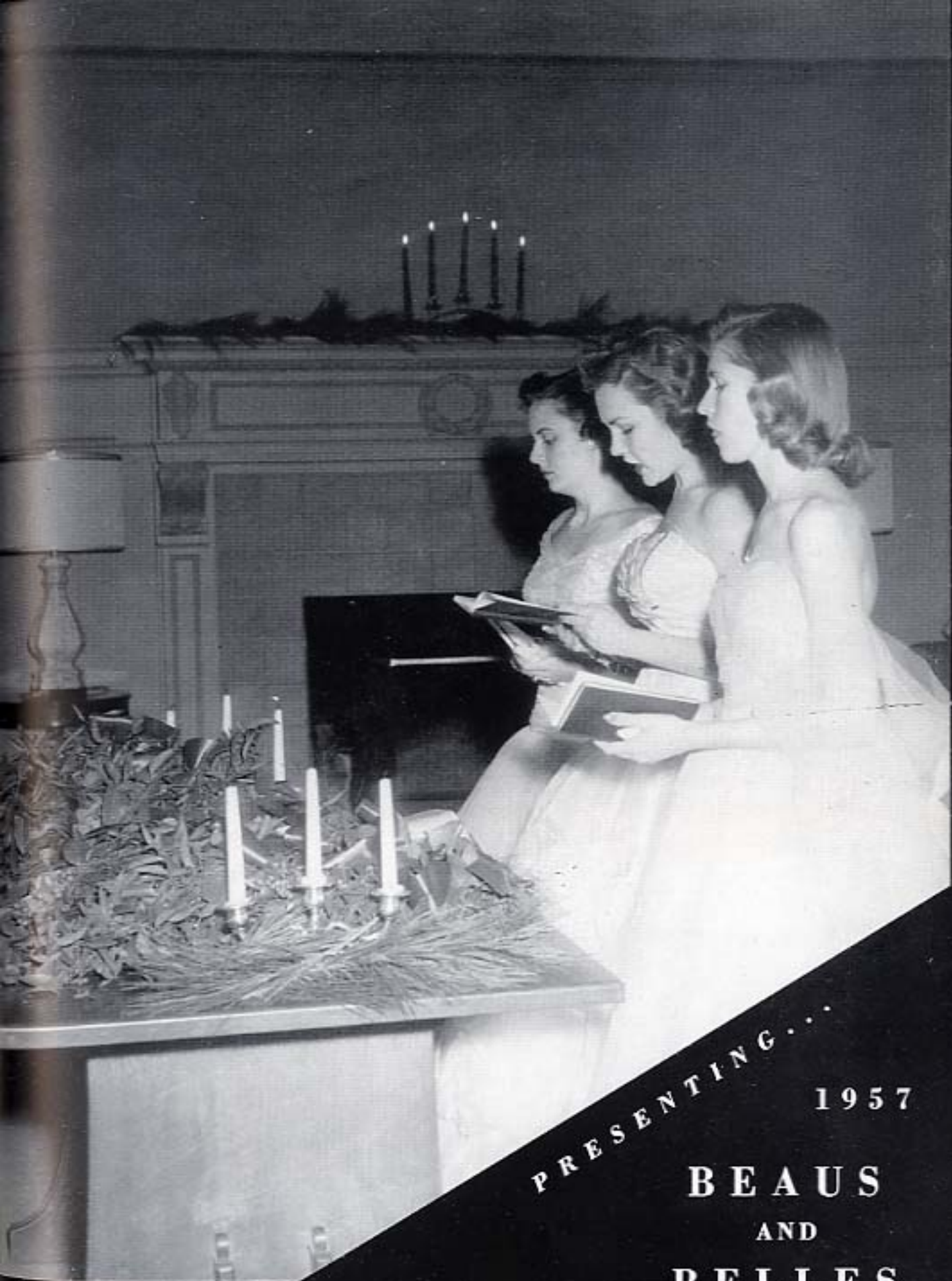
CLS. RT



JoAnn King, Pat Boyko, Susan Chance, Shirley Grieshaber, Shirley McGowan,  
Mary Ann Morgun, Janice Griffin, Mary Sidney Lines.

## CHEERLEADERS





PRESENTING...

1957

BEAUS  
AND  
BELLES



## “WHO’S WHO”

### *In American Universities and Colleges*

The Elite of the Class of '57, these seniors were selected for this high honor because of their scholastic record, social activities, and all-around record of student activities.

NANCY STARLING

WILLIAM E. JACKSON

FRANCES MAUGHON







VIRGINIA SMITH



R. DENSON WOOD, JR.



GEORGIA NEAL WOLFE

## “WHO’S WHO”

*College seniors of Valdosta State rewarded for their service . . .*

The college career of these students has been devoted to making college life better and more pleasant for all students. Homecoming . . . Student Publications . . . Dances . . . Student Assistants . . . These are but a few of the many jobs which these students undertook—successfully—in their respective roles as morale builders of Valdosta State.

JACK CARTER

CORA JEAN NORMAN

RONNIE HAIRE





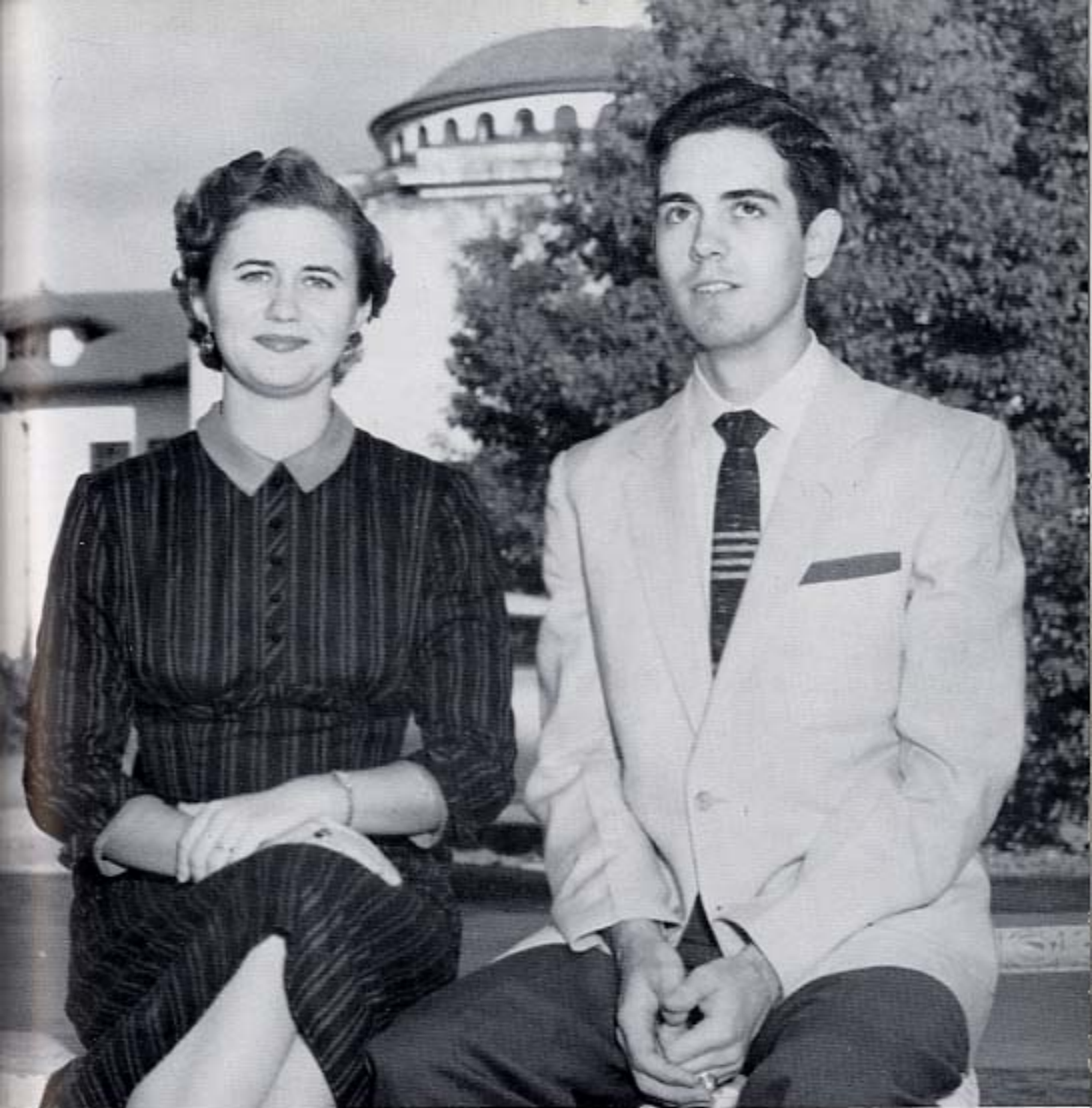
SIGMA ALPHA CHI

*Presents* BEN WOOD and LUCY HENDERSON

MARGA and MAC

*Best All Round*





**SIGMA ALPHA CHI**

*Presents* NAN STARLING and RAYMOND WILSON

**MARGA and MAC**

*Best All Round*

MISS VALDOSTA STATE COLLEGE

*miss shirley mcgowan*

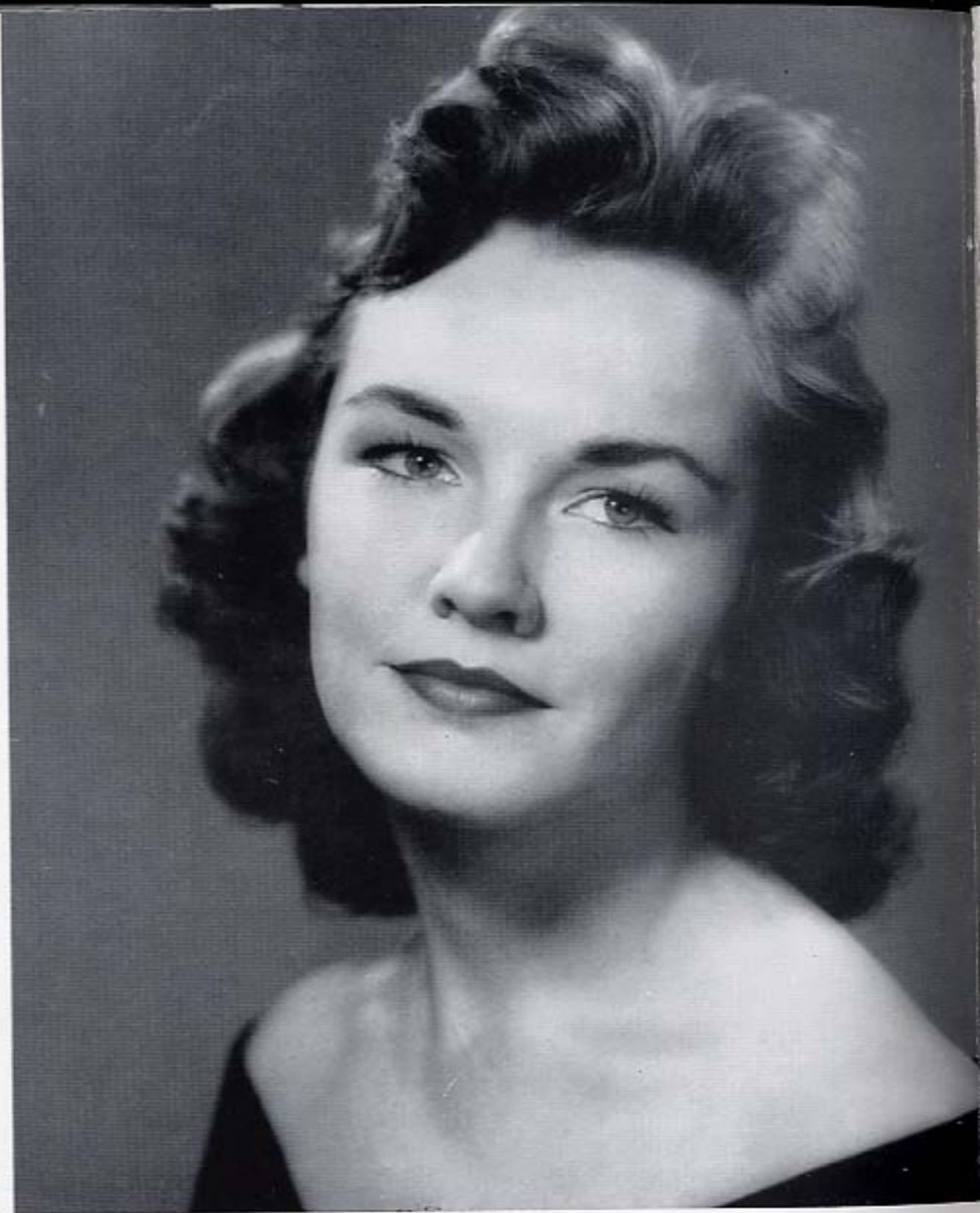






*miss georgia neal wolfe*

**HOMECOMING QUEEN**



*miss jo ann daniel*

SENIOR BEAUTY





*miss marsha paulk*

**JUNIOR BEAUTY**



*miss shirley mcgowan*

**FRESHMAN BEAUTY**





*miss frances zant*

SOPHOMORE BEAUTY

HOMECOMING COURT

*miss bennie baker*





HOMECOMING COURT

*miss lucy henderson*



HOMECOMING COURT

*miss marsha paulk*





HOMECOMING COURT

*miss mary sidney lines*



# "Songs of the South"

# HOMECOMING



Moody's Color Guard



"The Car"



"Jes waitin' for the parade"

Rebel  
Ball  
Game



Modern Car!



Valdosta High Band





# V. S. C. HOMECOMING DANCE

*"Show Boat"*



The Petticoats



The Scene



The Crowd

The Game

Billy Butterfield

And the President's Table





V. S. C. Meets the President

## THE YEAR'S MEMORABLE EVENTS

Homecoming Float



Crowning the Queen





***Congratulations***  
to the  
**1957 SENIORS**  
of the  
**VALDOSTA STATE COLLEGE**  
and  
welcome to the  
**Upperclassmen and Freshmen**

"THE CITY OF AZALEAS"

welcomes the opportunity of being your home during  
your college days and of sharing your culture.

May your associations and your memories of our city  
be such that you will return after your college days.

**Emory P. Bass, Mayor**  
**Councilmen:**

**Leslie R. Davis**

**J. Charlton Green**

**N. N. Langdale**

**Dr. Harry Mixson**

**James A. Paramore**

**W. W. Warwick**

*Congratulations*  
*to the Class of '57*  
*and best wishes from*

**OWENS-ILLINOIS**

Makers of (I) Products



Mill Division  
Multi-Wall Bag Division  
Valdosta Southern Railroad  
**VALDOSTA, GEORGIA**



## **BELCHER'S DRUGS**

**310 N. Patterson St.**

(Just North of Ritz Theater)

FOUNTAIN SERVICE AND  
SANDWICHES

Revlon and Dorothy Gray  
Cosmetics

**Phone 812**

**FOR QUICK DELIVERY**

Best Wishes from the Place  
Where the Students Gather

## **THE STUDENT CENTER**

Books • Monogrammed Goods • Sodas  
Sundries • Cosmetics

To You, the Student Body, We Have

Presented the

## **1957 PINE CONE**

May Your Memories of VSC Be Enshrined Here

### **THE 1957 PINE CONE STAFF**

WAYNE McCOLLERS  
Editor

RAYMOND WILSON  
Business Manager

There's nothing like giving  
folks what they want



BOTTLED UNDER AUTHORITY OF THE COCA-COLA COMPANY BY

**Valdosta Coca-Cola Bottling Works**  
VALDOSTA, GEORGIA

All Portraits in This Issue  
of the Pine Cone

Are by

**GOLDEN**

1519 N. Ashley St.

VALDOSTA, GA.

fine photography in

all its phases

# BROOKWOOD PHARMACY

Where All Our College  
Students Gather

PHONE 336

"Can't Be Beat"

Compliments of

**VALLOTTON'S DAIRY**

VALDOSTA, GA.

Compliments of

**MARTIN THEATRES**

RITZ

MARTIN DRIVE-IN

DOSTA

FORREST DRIVE-IN

PALACE



annuals of

distinction . . .



Original layouts, distinctive typography and sparkling reproduction that give your annual the luxurious appearance impossible to obtain by standard layout, mass-production methods.

*Bowen, Long & Young, Inc.*

110 TRINITY PLACE  
DECATUR, GEORGIA