



The Pine Cone
1935



Four Best Years of My Life

The Pine Cone

1 9 3 5



VOLUME 11

PRESENTED BY
THE SENIOR CLASS
OF THE

Georgia State Womans College
Valdosta, Georgia

The Four Best Years of My Life

Exit from a wonder-land that has been our exclusive kingdom for four glorious and eventful years. With a smiling sigh and a laughing tear we bid farewell to Alma Mater, our very dear and charming Mother Goose, — a collegiate Mother Goose, who with kindest inspiration rules her foster daughters.

So lectures and labs she's led us;
at quizzes and cuts she's smiled.
She's given us teas and dances
when we've been Alma Mater's
loving daughters. She's nodded
at friends and frowned at enemies.
She's guided us for these past



four years.

We, '21-'25's, ranged to her gym and plodded to her classes. We've learned to love both work and play. We've sung under her pine trees her sweet little rhymes on living. We've lived beneath her friendly roof and listened to her kind advice.

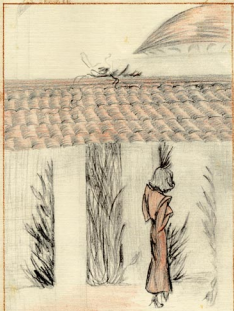
And now the class of '21-'25, Graduates - Alices, cherish this book of memories ghost-written by our Mother Good's chosen seniors. The essence of our best four years filling the pages of our Pine Lane.



~~1135~~







CAMPUS SCENES

Student, Student,
Dean and president,
How does your college grow?
With tall pine trees, and a soft warm breeze,
And pretty girls all in a row.



Across Campus





An Idle Hour in the North Pines





At Tea with the Seniors





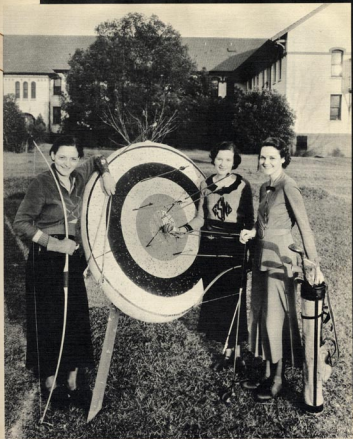
Before the Tea Dance





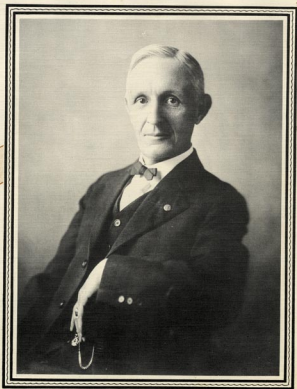
Love All





Discussing Scores





Dr. Jere M. Pound
In Memoriam

A GREETING TO THE PINE CONE



DR. FRANK R. READE
Executive-Dean

When the 1935 PINE CONE comes from the press, the first thing you will do will be to thumb through the freshly printed pages until you come to your own picture. There you will pause for some time—to be sure that your name is spelled properly, that your home town is listed correctly, that the editors have set down after your name all of the various clubs and organizations to which you belong.

If your likeness flatters you just a little, if your biography is accurate and complete,—then, for the moment certainly, the PINE CONE for 1935 is the finest annual you have ever seen! This conviction will grow on you as you turn through the pages.

The theme song of this year's annual is that your years in college are the happiest ones in your life. Perhaps it is hard for you to believe this. What with going to school all day, standing comprehensive examinations, submitting to disciplinary restrictions—how can days spent in such fashion be the happiest ones in your life?

All of you have enjoyed this or that in the past. All of you, in a dreamy sort of way, hope that you will be happy

in the future. The trick of it is to enjoy every minute of every day—now! Much of your time is filled with intellectual activity. Make the most of it. Enjoy it. Be happy in it. Believe, with the late Justice Holmes, that you have not earned the right to intellectual ambition until you have learned to lay your course by a star which you have never seen, until you have dug by a divining rod for springs that you may never reach.

And say to yourselves again and again that if these are not the happiest years surely they are the years of fullest opportunity. Wrest from them the key that will open the doors of happiness for you. Through those doors and beyond those doors lies life. The opportunity to make it a richer and a more abundant life is yours,—now.

And some day,—years and years from now,—you will again take up the PINE CONE for 1935. Just as the faint odor of jessamine or of wild grape recalls the past,—just as the memory of music fled stirs your heartstrings,—so this book will one day bring back to you the friendships, the loyalties, the little defeats and victories of your college days that will have broadened out into those latter years as an expression, satisfying and abiding, of the rest of life.





First row: ANNIE POWE HOPPER,
SARAH JANIE BUSH, FRANCES
RUTH CARPENTER, DAISY DANIEL
... Second row: JOSEPH AUSTIN
DURRENBERGER, MARIAN E.
FARBAR, GERTRUDE CORDELLA
GILMER

F A C U L T Y

ANNIE POWE HOPPER, Dean of Women, B.S.,
George Peabody College for Teachers; A.M.,
Columbia University; Teachers College Diploma as
Advisor of Women and Girls.

SARAH JANIE BUSH, Professor of Latin, A.B., Uni-
versity of Georgia; A.M., University of North
Carolina; Diploma, College of Classical Studies,
Rome, Italy.

FRANCES RUTH CARPENTER, Professor of Art, Bach-
elor's Diploma and B.S., Teachers College, Colum-
bia University; A.M., Ibid.

DAISY DANIEL, Professor of Home Economics and
Director of Boarding Department, B.S., Georgia
State College for Women.

JOSEPH AUSTIN DURRENBERGER, Professor of His-
tory and Social Sciences, A.B., Southwestern Uni-
versity; A.M., Columbia University; Ph.D., Ibid.

MARIAN E. FARBAR, Director of Health Service,
M.D., Medical College, University of Illinois.

GERTRUDE CORDELLA GILMER, Professor of English,
B.S., George Peabody College for Teachers; A.M.,
Ibid.





First row: HAROLD STRONG GULLIVER, MARGARET HALL, LENA JAMES HAWKES, LEONARD HARKEL
 Second row: ELIZABETH McREE, FRANCIS B. PARDEE, EARL W. PHELAN



F A C U L T Y

HAROLD STRONG GULLIVER, Professor of English. B.A., Yale University; A.M., Columbia University; Ph.D., Yale University.

MARGARET HALL, Instructor in German. Student at the Hilda Schule, Coblenz, Germany; A.B., Emory University; A.M., Ohio State University.

LENA JAMES HAWKES, Professor of Mathematics and Physics. A.B., Goucher College; A.M., Vanderbilt University; Ph.D., The Johns Hopkins University.

LEONORA IWEY, Professor of Physical Education. Graduate Sargent School for Physical Education; B.S., Georgia State College for Women; M.A., George Peabody College for Teachers.

ELIZABETH McREE, Instructor in Physical Education. A.B., Georgia State Women's College.

FRANCIS B. PARDEE, Teacher of Violin. Graduate Cincinnati Conservatory of Music; Pupil of Sevcik in Vienna, and of Robert Perutz and Julian Pulkowski, Cincinnati Conservatory.

EARL W. PHELAN, Professor of Chemistry. B.Chem., Cornell University; Ph.D., Ibid.





The new: MILDRED McCLELLAN
 PRICE, HAROLD H. FUNKE,
 LOUISE ANNE SAWYER, JAMES
 R. STOKES . . . Second row: ALI-
 MAE TEMPLE, HONORIA SAPELE
 TREANOR, GLADYS E. WARREN

F A C U L T Y

MILDRED McCLELLAN PRICE, Professor of History. A.B., Georgia State Women's College; A. M., Columbia University.

HAROLD H. FUNKE, Professor of Education. B.S., University of Illinois; M.S., Ibid; Ph.D., University of Chicago.

LOUISE ANNE SAWYER, Professor of Vocal Expression. Graduate, Columbia College of Expression; B.S., School of Speech, Northwestern University.

JAMES R. STOKES, Professor of Biology. B.S., University of Georgia; M.S., University of Wisconsin.

ALIMAE TEMPLE, Instructor in Music. A.B., Salem College; B.M., Ibid; graduate student Georgia Peabody College for Teachers, and Teachers College, Columbia University; pupil of Isadore and Harold Luchstone and of Mrs. C. Dyas Standish, New York City.

HONORIA SAPELE TREANOR, Professor of French. A.B., University of Georgia; student at the Sorbonne, Paris, France; A.M., University of Georgia.

GLADYS E. WARREN, Professor of Music and Director of the Department. B.M., Lake Erie College; graduate, New England Conservatory of Music; M.A., Iowa State University; pupil of Carl Beecher, Northwestern University; of Ernest Hutcheson, New York City; of Lee Pattison, Chicago; of Tobias Matthay, Matthey School of Pianoforte, London, England; of Arthur Alexander, Royal College of Music, London, England; and of Ashley Peltis, Eastman School of Music, Rochester, N. Y.





First row: IVA CHANDLER, EVELYN
DEARISO, J. R. DUSENBURY,
MILDRED LARSEN . . . Second
row: LILLIAN PATTERSON, CAR-
OLINE PARRISH THOMAS, MRS. E.
H. BECK.



F A C U L T Y

IVA CHANDLER, Assistant Dean of Women. A.B.,
Georgia State Womens College.

MILDRED LARSEN, Assistant to the Treasurer. A.B.,
Georgia State Womens College.

EVELYN DEARISO, Librarian. A.B., Georgia State
Womens College; B.L.S., Emory University.

LILLIAN PATTERSON, Assistant Librarian. A.B., Geor-
gia State Womens College.

J. R. DUSENBURY, Treasurer and Purchasing Agent.

CAROLINE PARRISH THOMAS, Secretary and Re-
corder. A.B., Georgia State Womens College.

MRS. E. H. BECK, Assistant Dietitian.





C L A S S E S

Seniors travel by land and sea;
Freshies wonder where the hot can be;
Juniors take their pens in hand;
While Sophomores dance the best they can;
So we spend our college year,
Getting the most of each moment we're here.





AVRYLEA BURCH
Valdosta, Georgia
A.B. MUSIC

Student Government Association; Phi Kappa Athletic Association; Fine Arts Club; Glee Club.

Avrylea is the young lady you've seen most frequently in the chemistry laboratory brewing mysterious concoctions over Bunsen burners, and discovering with an air of perfect composure just what happens when nucleoproteins are hydrolyzed. She has an inquisitive mind which keeps her busy discovering the whys and wherefores of everything she comes in contact with, so it is only occasionally that she can salvage a moment from her pursuit of knowledge and devote it to the arts. The particular branch of the arts for which she has a flair is music, and she plays the piano excellently. Perseverance is her watchword; she can take anything Fate has to offer without a sign of being disheartened.



HELEN MOODY CARTER
Valdosta, Georgia
A.B. BIOLOGY

Student Government Association; Valdosta Club; Science Club [1, 2, 3]; Math-Science Club [4]; Phi Kappa Athletic Club.

The younger Carter has followed closely in the footsteps of her illustrious sister, being the biologist of the senior class. To see her gazing intently into a microscope, you'd think she was watching a full dress parade at West Point or a scene from the current Gable-Crawford hit, instead of the private life of an amoeba. Biology seems to be an innate tendency of the Carters.



S E N I O R S



ANITA BRADLEY
Waycross, Georgia
A.B. HISTORY

Student Government Association; Y. W. C. A.; Argonian Literary Society (1, 2, 3); Phi Kappa Athletic Club (1, 2, 3); Science Club (2, 3).

Nita is one of those few, but extremely fortunate people who have learned that nothing is ever quite as bad as it looks at first glance. She takes everything with a smile, and the best thing is that her philosophical outlook is not assumed, but is an inseparable part of her character. Always a good scout, Nita has never been known to be other than good natured, friendly, and likable.



CAROLYN BRIM
Bison, Georgia
A.B. FRENCH

Student Government Association; Y. W. C. A.; Y. W. C. A. Cabinet (2); Council Representative (2); Phi Lambda Athletic Club (1, 2, 3); Argonian Literary Society (1, 2); Honors (1, 3); Entre Nous (3, 4); Vice-President Entre Nous (3); President Entre Nous (4); G. S. W. C. Emblems (4); PINE CONE Staff (4).

Who said Carolyn looked like Queen Elizabeth in that wine colored dress with the stand-up collar? Never having seen Her Majesty, we hesitate to give our opinion, but we will say that Carolyn has a stately air about her which we think especially befitting her status as a senior. That air is calculated to strike terror to the heart of any lowly freshman not fortunate enough to know her for the kind and sympathetic person she is. Never will we forget Carolyn's inspired interpretation of the Statue of Liberty in the play that Entre Nous produced this year, nor will we ever cease to envy her French accent.





GERALDINE ARRINGTON
Ellaville, Georgia
A.B. ENGLISH

Transfer from G. S. C. (1, 2); Student Government Association (3, 4); Y. W. C. A. (3, 4); Phi Lambda Athletic Club (3, 4); Argonian Literary Society (3); Vice-President Literary Society (3); Glee Club (3); English Club (3, 4).

We first knew Gerry after her transfer two years ago as Frances Arrington's sister, but that was only for the first few days. It didn't take her long to establish herself as a separate individual with a personality quite as likable as her sister's. One thing they hold in common is the talent for dramatics, but Gerry neglected to try out for Sock and Buskin Club, and so had to confine her acting to the Play Production class. Collecting bunny coats wouldn't be bad as a hobby, either.



ELEANOR BAILEY
Douglas, Georgia
A.B. ENGLISH

Transfer from S. G. S. C. (1, 2); Student Government Association (3, 4); Y. W. C. A. (3, 4); Y. W. C. A. Cabinet (3, 4); Phi Lambda Athletic Club (3); Glee Club (3, 4); Treasurer, Glee Club (4); Argonian Literary Society (3); Entre Nous (3); English Club (3, 4); PINE CONE Staff (4).

Eleanor is that rarest of rare persons, the possessor of a sympathetic nature who is never bothered with the cares of others because they like her too much to trouble her. Since her arrival two years ago she has made such a place for herself that we wonder why we didn't miss her before she came. Just being around her gives one a deep and abiding sense of the rightness of things, and it is fitting that she should have been voted the best all round senior, embodying as she does all those qualities which we should like to see in "Miss G. S. W. C."



S E N I O R S



VIRGINIA SHEPPARD
Savannah, Georgia
A.B. HISTORY

Student Government Association; Y. W. C. A.; Phi Lambda Athletic Club (1, 2, 3); Science Club (2); Glee Club (1); International Relations Club (1, 2, 3); Honors (3) Secretary of Sophomore Class; Treasurer and Secretary of Junior Class; President of Senior Class.

Blue-eyed Virginia, despite the fact that it might seem trite, has always reminded us of a Dresden China figure. She has that fragile quality about her. She has been the capable President of the Seniors this year, managing teas, dances, open-houses and benefit bridges with the same charm and graciousness. All of which goes far toward showing why Virginia was voted the most attractive of the Seniors this year.



LOUISE AMBOS
Savannah, Georgia
A.B. HISTORY

Student Government Association; Y. W. C. A.; Phi Kappa Athletic Club (1, 2, 3); Glee Club (2); Philharmonic Club (1, 2, 4); Science Club (3); Argonian Literary Society (3); International Relations Club (3, 4); Y. W. C. A. Cabinet (2, 3); PINE BRANCH Staff (3); Business Manager of PINE CONE (4); Honors (1, 2); G. S. W. C. Emblem (3).

To hear her talk you would think Louise was "just a home girl", but you should see her at a dance! You'd know positively she was a social butterfly until you saw her in the library studying. That sight would be enough to convince anyone that Louise was one of the intelligentia. And the way she manages the business end of the PINE CONE leads us to believe that after all she was meant to be a business woman. The only thing that we can be sure of is that Louise is a girl of unusual charm—the rest must continue to depend on the moment.





JUDY COCHRAN
Camilla, Georgia
A.B. ENGLISH

Student Government Association; Y. W. C. A.; Y. W. C. A. Cabinet (2, 3); Council Representative (3); Phi Kappa Athletic Club (1, 2, 3); Argonian Literary Society (1, 2); Philharmonic Club (1, 2); Secretary-Treasurer, Philharmonic Club (2); PINE BRANCH Staff (2); Numerals (2); G. S. W. C. Emblem (2); English Club (3, 4); Glee Club (1, 2, 3, 4); President, Glee Club (4).

Orchids to Judy for achieving at one and the same time poised sophistication and unaffected simplicity. How she does it, we can't tell, but there it is—see for yourself. As President of the Glee Club Judy has had an opportunity to exercise that efficiency which makes her such a competent assistant to Miss Hopper. A sad thing, really, that after keeping office all afternoon in Ashley, she must live next door to the telephone at the Senior House.



GRACE LAHEY CORN
Valdosta, Georgia
A.B. BIOLOGY

Student Government Association; Phi Kappa Athletic Club (1, 2, 3); Science Club (1, 2, 3); Math-Science Club (4); Sock and Buskin Club (2, 3, 4); Sock and Buskin Club Play (2); Euclidian Club (2); Valdosta Club; Honors (2, 3).

She may be Mrs. Corn to some people, but we used to know her "when". A very attractive girl she was, too, and so versatile that she was equally at home as Alice in the mad tea party, a middle aged sheriff in TRIFLES, or Helen Claire's bashful beau on a bicycle built for two. Nor do her accomplishments end here—she knew how to cook even before she was married. That probably interested Mr. Corn more than her dramatic ability, or her triumphs as a devotee of the dance.





RUTH ELLIS
Senesh, Georgia
A. H. HISTORY

Student Government Association; Y. W. C. A.; Y. W. C. A. Cabinet [2]; Phi Kappa Athletic Club; Argonian Literary Society [1, 2, 3]; Glee Club [1, 2, 3, 4]; International Relations Club [2, 3, 4]; Science Club [1, 2, 3]; Secretary Argonian Literary Society [3]; PINE BRANCH Staff [3]; Honors [3]; S. G. A. Emblem [2]; Athletic Nominats [2]; Letter [3].

Have you ever heard of Harold? If you don't know the co-manager of the County Store very well, perhaps you have misted hearing about him, but according to Our Ruth he's the best one and she ought to know. It's not every girl who can keep HIM in hand while she casually gets a degree, but Ruth has it down to a fine art. Perhaps the secret of her success lies in her lovely no-quit-and-hair, but we'd like to wager that her sweet disposition comes in for quite a share of his admiration.



EMILY FLIKER
Oshena, Georgia
A. H. HISTORY

Student Government Association; Y. W. C. A.; Y. W. C. A. Cabinet [2]; Phi Lambda Athletic Club [1, 2, 3]; Science Club [1]; Argonian Literary Society [1]; PINE BRANCH Staff [2, 3]; International Relations Club [2, 3, 4]; Honors [2, 3, 4].

It began in the first grade, when a red-headed boy thought that "Taker" was a better name than Fliker, and ever since then Fliker has been not Fliker, but "Taker", if you follow us. There was a time when "Taker" was going to be a doctor, but she changed her mind. And there was a time when she wrote poetry which was duly published and greatly admired. But she changed her mind again. Woman's privilege you know. The last time we've heard about, she showed signs of developing into a feminine Winchell. Obviously you never can tell.





HENRY KATE GARDNER
Camilla, Georgia
A.B. VOCAL EXPRESSION

Transfer from University of Miami (1); Student Government Association; President, Student Government Association (4); Y. W. C. A.; Phi Lambda Athletic Club; Y. W. C. A. Cabinet (3, 4); G. S. W. C. Emblem (3); Argonian Literary Society (2, 3); Sock and Buskin Club (2, 3, 4); Council (4); PINE BRANCH Staff (2); Honors (2, 3, 4); Sock and Buskin Play (2, 4).

Our Student Government President is thrice blessed, possessing as she does an innate love for poetry and drama, an immense capacity for friendship, and the desire plus the ability to do her job well, whatever it may be. Somehow one always feels that Henry Kate can be depended on whether the occasion is an important S. G. A. Conference, Sock and Buskin rehearsal, or a basketball game. And according to the other members of the 350 dancing class "Henri" can blow imaginary soap bubbles with the best of 'em.



MAJORIE GROOVER
Quitman, Georgia
A.B. HISTORY

Student Government Association; Y. W. C. A.; Phi Lambda Athletic Club; Argonian Literary Society (1, 2, 3); International Relations Club (2, 3, 4); President, International Relations Club (4); Honors (3); PINE CONE Staff (4).

This year under the expert leadership of Majorie the I. R. C. has more than upheld its reputation for being one of the most active clubs on the campus. Second, of course, to history in the affections of Majorie, are the tea dances, and it is seldom that she misses one. If we ever thought we looked as stunning in a tea dress as she does, we'd make a point of attending all of them too. Only one word is necessary to describe her—*svelte*.





LUCY HAMMOND
Griffin, Georgia
A.B. FRENCH

Student Government Association; Y. W. C. A.; Phi Lambda Athletic Club (1, 2, 3); Glee Club (2, 3, 4); Secretary Glee Club (4); Argonian Literary Society (1, 2, 3); Science Club (2, 3); Entre Nous (3, 4); Parliamentarian Entre Nous (4).

Lucy has the sort of hair that makes one want to go out and get some just like it. We've known her for four years now, and not once during that time can we remember seeing a single hair out of place. That must be a record. Another thing we especially admire about Lucy is her voice—we have a weakness for contraltos.



DOROTHY JOHNSON
Naylor, Georgia
A.B. FRENCH

Student Government Association; Argonian Literary Society (2); Valdosta Club (1, 2, 3); Phi Kappa Athletic Club (1, 2, 3); Entre Nous (4).

Dorothy is taking an A. B. at such a tender age that she practically amounts to an infant prodigy, but she is so utterly unpretentious that many of us probably don't realize it. She faces exams and staggering assignments with an unconcern that is little short of magnificent, and makes the grade with apparently effortless ease which keeps us baffled. Dorothy is more than witty—she's humorous, and it's fun to sit next to her in class. Her humor is subtle and consequently doesn't register on many, but those who get it love it.



S E N I O R S



NOELLENE JOHNSON
Valdosta, Georgia
A.B. HISTORY

Student Government Association; Valdosta Club; Sororian Literary Society (2, 3); International Relations Club (3, 4); Phi Lambda Athletic Club (3, 4); Athletic Numerals (3).

Noellene, the eldest of the dancing Johnsons, has the admirable quality of always seeming to have a good time. Her naturally curly hair invariably looks like an advertisement for a beauty parlor, and the humor of it lies in the fact that she does it herself with a poke here and a squeeze there. Noellene is not only a history major, she's a history fan. She can read references in the twinkling of an eye, and actually likes it; and that's the worst we know about her.



MARIE JOINER
Albany, Georgia
A.B. ENGLISH

Student Government Association; Y. W. C. A.; Phi Lambda Athletic Club (3, 4); Sororian Literary Society (3); English Club (4); Campus Canopy Staff (4); Transfer from Shorter (3).

If Marie had been a boy instead of the attractive girl she is, she probably would have joined the Marines,—she likes to travel, and no matter what the situation, she always has it in hand. She is one of the most accommodating people we know, and she does favors for freshmen or faculty alike without the slightest hesitation. According to her, she doesn't "comprend" very readily, but no one else seems to notice that difficulty, so we suspect it is a personal prejudice.





VIRGINIA KIRKLAND
Metter, Georgia
A.B. ENGLISH

Student Government Association; Y. W. C. A.; Argonian Literary Society (1, 2); Phi Kappa Athletic Club (1, 2, 3); Science Club (2, 3); PINE CONE Staff (4).

There was once a time when Virginia was one of the brightest of the stars which shone in the Play Production class. She did Hamlet and Pierrot in turn, and quoth she carelessly, "Moon is just a word to swear by". But that was before she met the Floridian. Now Virginia reads ROMEO AND JULIET and hopes the moon will be not only pale with grief, but green with envy. If the moon could see the way her eyes sparkle when she laughs, or hear her practicing her voice lesson, perhaps it would change, but being so far away, it seems likely that Virginia will have to struggle along with the same old moon.



ELIZABETH LARISEY
Valdosta, Georgia
A.B. ENGLISH

Student Government Association; English Club (3, 4); Vice-President English Club (4); Valdosta Club; Treasurer Valdosta Club (3); Vice-President Valdosta Club (4); Phi Lambda Athletic Club (1, 2, 3); PINE BRANCH Staff (3); Philharmonic Club (3); Co-editor PINE CONE (4); Honors (2, 3).

Rumor has it that our co-editor is the sort of person who would turn pink and fall into a spasm if some audacious soul should mention cats, fairy stories, and Richard Halliburton in the same breath. We can't be sure, since this is probably the first time it was ever done. But this we do know—she's exactly the sort of person with whom you'd like to go to a circus, or talk about modern drama, or discuss the new trends in poetry. In spite of being the author of any number of delightfully whimsical essays which have periodically graced the PINE BRANCH, she modestly counts as her most admirable accomplishments her ability to wiggle her ears and grin like the Cheshire cat in ALICE IN WONDERLAND.





CLARE LAWSON
Savannah, Georgia
A.B. MATHEMATICS

Student Government Association; Y. W. C. A.; Phi Lambda Athletic Club; Athletic Numerals (1); Letter (2); Cup (3); G. S. W. C. Emblem (2); Honors (1, 2, 3, 4); Argonian Literary Society (1, 2, 3); Science Club (3); Euclidian Club (1, 2, 3); Math-Science Club (4); Vice-President Math-Science Club (4); PINE BRANCH Staff (3); Athletic Council (1, 2, 3); Secretary-Treasurer Senior Class.

We used to think that a Math major who minored in Chemistry couldn't possibly do anything else, but Clare completely disproves that idea. Ever enthusiastic, and keenly appreciative of beauty, she is yet level-headed enough to keep her sense of values unconfused. Never too busy to help others, or too lazy to help herself, she seems to have discovered the practical wisdom of never letting her play interfere with her work—or her work interfere with her play.



DOROTHY OGLETREE
Savannah, Georgia
A.B. HISTORY

Student Government Association; Y. W. C. A.; Phi Kappa Athletic Club; Argonian Literary Society (1, 2, 3); Y. W. C. A. Cabinet (3); Secretary of Y. W. C. A. (4); President of Argonian Literary Society (3); Presidents' Club (3); G. S. W. C. Emblem (3); Science Club (1, 2, 3); Athletic Council (2, 4); Athletic Numerals (1); Letter (2); Cup (3); International Relations Club (3, 4); Glee Club (2, 3, 4).

"Off to the races!" Frankly we don't see how she does it. Every time we see Dot she is on the way to town or to a show, but we never hear of that smart young lady letting a lesson slide until the next day, or showing up in class without something to contribute to whatever discussion is under way at the moment. And speaking of discussions, whenever you see a half dozen seniors idling around, it's always one of two things—a bull session, or Dot relating the Amazing Adventures of Little Audrey.





MARY POLHILL
Sylvester, Georgia
A.B. FRENCH

Student Government Association; Y. W. C. A.; Argonian Literary Society (2); Phi Kappa Athletic Club; Entre Nous (3, 4); Secretary-Treasurer Entre Nous (3, 4); Fine Arts Club (4); Recorder of Points Student Government Association (4); Transfer from Bessie Tift (2); May Queen.

Bright eyes and curving lips—there's no one in the senior class with quite as stimulating a smile as Mary. You can't keep from breaking into a grin yourself when you see it. What with orchids at Easter and 'phone calls from Chicago, it's no wonder you seldom see Mary with the blues.



OLA LEE POWELL
Valdosta, Georgia
A.B. ENGLISH

Student Government Association; Phi Kappa Athletic Club (2); Sororian Literary Society (2); Valdosta Club (2); Entre Nous (2); English Club (2); Honors (2, 4).

Ola Lee has made us wonder with Goldsmith's villagers "that one small head should carry" all she knew. Besides doing advanced work in piano, organ, and voice, she finds it possible not only to do four years' college work in two and a half, but to do it with honors. All of which makes Ola Lee a very capable small person, but the most astounding feat she has ever performed is the reading of SO RED THE ROSE in two days. She has such a wide streak of whimsicality in her make up that she does things like persuading her family to buy a house with a balcony, so she could play Juliet. We are told that the Juliet episode never came to pass, but it was a good idea at that, wasn't it?





ESTELLE ROBERTS
Cordale, Georgia
A.B. ENGLISH

Student Government Association; Y. W. C. A.; Phi Lambda Athletic Club; Athletic Council [3, 4]; Argonian Literary Society [1, 2, 3]; Science Club [1, 2]; English Club [3]; Sock and Buskin Club [2, 3, 4]; Vice-President Sock and Buskin Club [3]; President Sock and Buskin Club [4]; Sock and Buskin Club Play [2, 4]; G. S. W. C. Emblem [4]; Literary Editor PINE CONE [4].

Perhaps the most engaging trait in Estelle is the way she has of making the person she is with feel most important, or witty, or talented. Estelle is an ardent dramatic clubber, and the plays and skits are legion that would have been much the poorer without her. She is no mean athlete, and when she shoots an arrow into the air it doesn't go "she knows not where". Estelle has a genius for milling around doing nothing in particular, and then suddenly producing a finished piece of work, whether doing a Robin Hood on the archery range or a short story for the PINE BRANCH. She isn't the most back-slapping person in the world, but she has for her friends an unswerving loyalty that warms one's heart to know about.



WILLENE ROBERTS
Valdosta, Georgia
A.B. VOCAL EXPRESSION

Student Government Association; Phi Lambda Athletic Club; Sock and Buskin Club [1, 2, 3, 4]; Vice-president Sock and Buskin Club [2]; Sock and Buskin Club Play [1, 2, 3, 4]; Fine Arts Club [2, 3]; Art Committee of PINE CONE [2, 3].

We would like to introduce Willie to the gentleman who first said, "A jack of all trades is good at none," so he could change his mind. Besides being a first-rate artist, she dances, plays the violin, is an excellent actress, and has been the pride of the Lambdas in many a golf tournament. When you add to that a pair of elevating eyebrows and a green Chevrolet, there is little more to be desired. It is difficult to imagine a Christmas Festival program or May Day program without Willie.





LOUISE SMITH
Fitzgerald, Georgia
A.B. BIOLOGY

Student Government Association; Y. W. C. A.; Argonian Literary Society (3); Math-Science Club (4); Phi Lambda Athletic Club (3, 4); Transfer from Mercer (3).

Although she is apparently guileless, we yet can prove that in reality Louise is a very calculating young miss, for didn't she practice tennis for three hours every day so that she could go out to the Country Club at night and "ace" 'em? She believes in punctuality to such a degree that if she has a date for eight o'clock she expects him to arrive at seven fifty-five, or else! Maybe it's a good thing that her hair is raven instead of red.



KATHLYN TAYLOR
Valdosta, Georgia
A.B. FRENCH

Student Government Association; Entre Nous (3, 4); President Entre Nous (3); Presidents' Club (3); Valdosta Club (1, 2, 3); Phi Kappa Athletic Club (1, 2, 3); Secretary-Treasurer of Student Government Association (4).

Kathlyn has blondish curls and a weakness for being taken out to supper, but she is not as frivolous as that sounds. She is skilled in the domestic arts, and looks as if she were made to order for some young man to refer to proudly as "the little woman." Kathryn is intensely interested in the modern languages and served as president of Entre Nous the first year it came into being.





MARGARET ELIZABETH TOUCHTON
Valdosta, Georgia
A.B. ENGLISH

Student Government Association; Valdosta Club (2, 3, 4); Phi Lambda Athletic Club (2, 3); Entre Nous (3, 4); English Club (3, 4); President English Club (4); Transfer from Duke University.

As an English major (and president of the English Club in her Senior year), a French minor, and a history enthusiast, Margaret has her hands full. To those who have not tried that particular combination, it may not look like work, but if not, looks are again deceiving. Nevertheless, she seems to thrive on it. Aside from work, Margaret likes dogs, red bath towels, and handkerchiefs, whether separately or together is not for us to say.



HELEN CLAIRE VARNEDOE
Valdosta, Georgia
A.B. FRENCH

Student Government Association; Phi Lambda Athletic Club (1, 2, 3); Valdosta Club; Entre Nous (3, 4); Glee Club (1); PINE CONE Staff (4).

Dancing eyes, dancing feet, a bit of charm, a dash of meriment, and you have the picture of Helen Claire. No program is ever complete without the graceful performance of this petite Columbine who has shared all honors so often with the one who was Lahey. The two have danced their way to fame if not to fortune on our campus, and we defy anyone to take their place.





ANNIE BELLE WEATHERFORD
Savannah, Georgia
A.B. BIOLOGY

Student Government Association; Y. W. C. A.; Phi Lambda Athletic Club; Vice-president Athletic Club (3); President Athletic Club (4); Athletic Council (3, 4); Philharmonic Club (1, 2); Argonian Literary Society (1, 2); Sergeant-at-Arms (2); Euclidian Club (2); Math-Science Club (1, 2, 3, 4); Secretary-Treasurer of Sophomore Class; President Junior Class; Presidents' Club (3); G. S. W. C. Emblem (3); Honors (1, 2, 3, 4); Activities Editor PINE CONE; Numerals (1); Letter (2); Cup (3).

When "A.B." was voted the best sport in the Senior Class, it wasn't only her prowess as an athlete that we had in mind, considerable though it is. It's the way she plays the game that we most admire; fairly, without making excuses if she has an off day, always ready to smile whether she is on the winning or the losing side.



MARY ELIZABETH WEATHERFORD
Savannah, Georgia
A.B. HISTORY

Student Government Association; Y. W. C. A.; President Y. W. C. A. (4); Y. W. C. A. Cabinet (3, 4); Phi Kappa Athletic Club (1, 2, 3, 4); Athletic Council (3); Argonian Literary Society (1, 2); G. S. W. C. Emblem (3); Honors (1, 2, 3, 4); Glee Club (1, 2, 3, 4); Secretary Glee Club (2); International Relations Club (2, 3, 4); Vice-president International Relations Club (3).

Once we thought the elder Weatherford was "just too dignified for words," but that was before we really became acquainted with her. She excels in that most delightful form of humor termed dry wit, and combines it beautifully with that same dignity so becoming her office as president of the Y. W. C. A.



S E N I O R S



ELIZABETH WILKES
Adel, Georgia
A.B. HISTORY

Student Government Association; Y. W. C. A.; Phi Kappa Athletic Club (1, 2, 3, 4); Argonian Literary Society (1, 2); Science Club (1, 2); PINE CONE Staff (4).

"Chillun, I'm telling you the facts," and she's off on the funniest, or the most exciting thing that ever happened. She loves a good story, does Elizabeth, and is adept in the art of telling them. We don't mean to be mysterious, but there were two people in the Senior house who wouldn't ever have made a class on time if it hadn't been for Elizabeth. Selecting clothes in a hurry may be as much of an art as story-telling. And she blossomed out into such a go-getting ad-getter these past few months that it has been all we could do to keep up with her.



MARGARET ZIPLIES
Savannah, Georgia
A.B. BIOLOGY

Student Government Association; Y. W. C. A.; Euclidian Club (1, 2); Y. W. C. A. Cabinet (1, 2); Freshman Council Representative; Argonian Literary Society (1, 2, 3); PINE BRANCH Staff (3); Presidents' Club (3); G. S. W. C. Emblem (3); Honors (1, 2, 3, 4); Phi Lambda Athletic Club (1, 2, 3); Phi Harmonic Club (1, 2, 3, 4); President Phi Harmonic Club (3); Science Club (1, 2, 3); Vice-President Science Club (3); Math-Science Club (4); Glee Club Accompanist (2, 3, 4); Honorary member Sock and Buskin Club (4).

If the word "charm" should ever become personified, undoubtedly it would look like Margaret in a black evening dress. That may explain why half of the unattached young men in Valdosta turned out for her senior recital, and almost as many from Savannah. After that occasion Margaret had enough flowers to start a floral shop. She often may be seen walking behind a stack of books on comparative embryology, looking like the muse of music disguised as a biology student.



J U N I O R S .



RUTH JONES
PRESIDENT OF JUNIOR CLASS
Thomasville, Georgia



CLARA DAVIS ADAMS
Moultrie, Georgia



MIRIAM ADAMS
Camilla, Georgia



MARY ALDERMAN
Favo, Georgia



J U N I O R S



MARY ASKEW
Arlington, Georgia



CLEO BARBER
Bainbridge, Georgia



AMANDA BARKSDALE
Bicely, Georgia



MARGARET BERRYHILL
Lakeland, Georgia



J U N I O R S



SARA BINCHAM
Valdosta, Georgia



JANE BROOKS
Valdosta, Georgia



HARRIETTE BULLARD
Nashville, Georgia



JANET COOK
Boston, Georgia



J U N I O R S



SARA RACHEL COXWELL
Leesburg, Georgia



JO DANIEL
Ludowici, Georgia



MARY DEARISO
Sylvester, Georgia



CLARA LOUISE DRISKELL
Summey, Georgia



J U N I O R S



LEONORA DU FOUR
Albany, Georgia



ROSALYN EUBANKS
Rochelle, Georgia



CAROL FORRESTER
Leesburg, Georgia



NELLIE MAY GANNON
Valdosta, Georgia



J U N I O R S



FRANCES GARBUTT
Valdosta, Georgia



MERLE GIBSON
Columbus, Georgia



LUELLE GIDDENS
Ray City, Georgia



NELL GREENE
Valdosta, Georgia



J U N I O R S



MYRA HACKETT
Moultrie, Georgia



BILLIE HAM
Valdosta, Georgia



LOUISE HARDY
Quitman, Georgia



RUBY HARRISON
Fitzgerald, Georgia



J U N I O R S



FLORRIE HAWKINS
Savannah, Georgia



LOUISE ODOM HOWELL
Valdosta, Georgia



VIRGINIA HUGHES
Glenville, Georgia



BROUN HUTCHINSON
Valdosta, Georgia



J U N I O R S



NELLIE JOHNSON
Valdosta, Georgia



NETTIE JOHNSON
Valdosta, Georgia



BESSIE JO JOHNSON
McRae, Georgia



VANELLE KENDALL
Valdosta, Georgia



I U N I O R S



MARTHA LOWREY
Dawson, Georgia



ETHLYN MASSEY
Jesup, Georgia



EVELYN MAY
Quitman, Georgia



JOY MILLER
Albany, Georgia



J U N I O R S



JESELYN MOSELEY
Valdosta, Georgia



SARAH OWENS
Valdosta, Georgia



MARY PERRY
Valdosta, Georgia



EDNA EARLE FLEMMONS
Valdosta, Georgia



J U N I O R S



UNA RITCH
Jesup, Georgia



CAMILLE ROGERS
Newton, Georgia



ESTHER SMITH
Sycamore, Georgia



PATSY SPARKS
Fitzgerald, Georgia



J U N I O R S



BETH TERRY
Quitman, Georgia



LUCILE THOMPSON
Ellaville, Georgia



ELIZABETH TILLMAN
Valdosta, Georgia



JOYCE TIPION
Sylvester, Georgia



J U N I O R S



VANGIE TRIMBLE
Moultrie, Georgia



VIRGINIA TUCK
Thomasville, Georgia



MILDRED TURNBULL
Moultrie, Georgia



LELA MAE TYSON
Jesup, Georgia





Entrance to West Hall





Dormitory Row



J U N I O R S



LEILA URQUHART
Waycross, Georgia



AMES WATKINS
Milledgeville, Georgia



CARRENE WEST
Moultrie, Georgia



DORIS YOUNG
Yaldosta, Georgia





SOPHOMORES

FIRST ROW

EMMA AMBROS . . . Savannah, Georgia
 PRESIDENT OF SOPHOMORE CLASS
 IGNICE RUTH ADAMS . . . Marianna, Florida
 ANTONETTE ANDREWS, Thomasville, Georgia

SECOND ROW

ELIZABETH AUTREY . . . Valdosta, Georgia
 BERNISE REASLEY . . . Glennville, Georgia
 MARGARET BENNETT . . . Joseph, Georgia

THIRD ROW

FRANCES BINGHAM . . . Valdosta, Georgia
 RUTH MILL BOWEN . . . Valdosta, Georgia





SOPHOMORES

FIRST ROW

MARIE BOWER Oulfa, Georgia
 LILLIAN BRADG Savannah, Georgia
 LOUISE BUSSEY Lake Park, Georgia

SECOND ROW

LILA CALLENDER Valdosta, Georgia
 MARY MELL CARLYLE Valdosta, Georgia
 FRANCIS CARSON Talbotton, Georgia

THIRD ROW

MARGARET CARTER Ray City, Georgia
 LOUISE CHILDERS Milledgeville, Georgia





SOPHOMORES

FIRST ROW

CAROLYN COOK Geneva, Georgia
 MARY ELLIEN COBBES . . Jacksonville, Florida
 LOIS CORLEY Valdosta, Georgia

SECOND ROW

ALEXIA DALEY Dublin, Georgia
 MARGARET L. DALTON . . Valdosta, Georgia
 LOUISE ELROD Fort Valley, Georgia

THIRD ROW

FRANCES FLUKER Quitman, Georgia
 DOROTHY FULLER Quitman, Georgia





SOPHOMORES

FIRST ROW

MARTHA GAYQuitman, Georgia
 RUTH GODWINValdosta, Georgia
 MARY EDITH GRANGER, Rutledge, Georgia

SECOND ROW

ELIZABETH GREEN . . . Jacksonville, Florida
 LOTA GRIFFITHKendall, Georgia
 JESSILYN GRIGGSPerry, Georgia

THIRD ROW

FLORA GRIMESValdosta, Georgia
 CATHERINE HAGANSavannah, Georgia





SOPHOMORES

FIRST ROW

MARY KATHERYN HARBELL, Valdosta, Georgia
EUTH HATCHER Moultrie, Georgia
MARY BETH HIGH Lake Park, Georgia

SECOND ROW

MARY LOIS HITCH Valdosta, Georgia
MARGARET HUDSON Newton, Georgia
VIRGINIA INGRAM Bainbridge, Georgia

THIRD ROW

MARTHA INEZ JENNINGS, Valdosta, Georgia
LORENE JOHNSON Thomasville, Georgia





SOPHOMORES

FIRST ROW

RUBY JONES Valdosta, Georgia
 JOSEPHINE JOUBERT . . . Savannah, Georgia
 RISOLLA KELLEY . . . Savannah, Georgia

SECOND ROW

WINNIE KATE KNIGHT . . . Quitman, Georgia
 ERNIE LANG Omega, Georgia
 ERNIE C. LANGDALE . . . Valdosta, Georgia

THIRD ROW

MELY LEFFRANST Valdosta, Georgia
 MARTIL LUNDY Bolton, Georgia





SOPHOMORES

FIRST ROW

MARGUERITE McCALL . . . Tampa, Florida
 LAURA McLEOD Peachtree, Georgia
 MARGUERITE MEADOWS, Glenville, Georgia

SECOND ROW

MARIE MIDDLETON Colquitt, Georgia
 ELEANOR MILLER Sylvester, Georgia
 MARIE MILLER Boston, Georgia

THIRD ROW

MAY BELLE MOBLEY Bainsbridge, Georgia
 ELOISE WOODS Naylor, Georgia





SOPHOMORES

FIRST ROW

CATHARINE MORGAN . . . Pembroke, Georgia
 SARAH ELLEN MORGAN . . . Milledge, Georgia
 LUCILE MURPHY . . . Valdosta, Georgia

SECOND ROW

BERNIE LOU NEWSOME . . . Valdosta, Georgia
 MILDRED OGLES . . . Rome, Georgia
 BOISE OGLETREE . . . Savannah, Georgia

THIRD ROW

HEMELIA OLLIFF . . . Quitman, Georgia
 EMILY HARRISH . . . Valdosta, Georgia





SOPHOMORES

FIRST ROW

CARROLL PEERLES Valdosta, Georgia
 ANNETTE PHILLIPS Eastman, Georgia
 DOROTHY PITMAN Ocala, Georgia

SECOND ROW

GWENDOLYN OSWINKER . . . Valdosta, Georgia
 MAYME REGISTER Adel, Georgia
 MARION REID Homerville, Georgia

THIRD ROW

ESTELLE RICKS Reynolds, Georgia
 MARY AGNES ROANE . . . Savannah, Georgia





SOPHOMORES

FIRST ROW

DORIS ROWLAND Wightville, Georgia
 ELSIE SIMS Thomasville, Georgia
 MARGARET SIMS Ouley, Georgia

SECOND ROW

MAXINE SIMS Ouley, Georgia
 LILLIAN SLOCUMB Damon, Georgia
 LA FOREST SMITH Valdosta, Georgia

THIRD ROW

SHELLY SPARKS Fitzgerald, Georgia
 IDA LEE STEARMAN Savannah, Georgia





SOPHOMORES

FIRST ROW

HILDA SUMMER Cordele, Georgia

DORIS SWYNOLE Ray City, Georgia

FLORENCE THARP Leesburg, Georgia

SECOND ROW

LORINE THOMAS Valdosta, Georgia

MARY THOMAS Jessup, Georgia

MATILDA TILLMAN Quitman, Georgia

THIRD ROW

HARRIET TISON Moultrie, Georgia

ANNE TURNER Valdosta, Georgia





SOPHOMORES

FIRST ROW

MARGARET BARN . . . Warrenton, Georgia
 VIVIAN VINCINEMable, Georgia
 MARGARET WADEYaldosta, Georgia

SECOND ROW

CAROLYN WARNELL . . . Pembroke, Georgia
 PEARL WILSONCondele, Georgia
 LUCILLE WURSTChickasha, Georgia





MARGARET CANNON
President of Epworth Club
Cairo, Georgia

BONNA BARFIELD
Savannah, Georgia

MARGARET BULLARD
Nashville, Georgia

ARIE V. CARTER
Tampa, Georgia

BENJIE ANDREWS
Tampa, Georgia

CELIA BAGNOSTON
Leno City, Florida

BETH BURN
Waynes, Georgia

GAYLE CHUTE
Gresham, Georgia

WELYN ASHBROCK
Milledge, Georgia

EDITH BONNETT
Gainesville, Georgia

IRVING MERLE BYRD
Frost, Georgia

BONNIE COOKMAN
Centula, Georgia

CAROLYN ASHEP
Arlington, Georgia

ANN BROOKS
Milledge, Georgia

ALYDIA CARTER
Rockingham, Georgia

GERALDINE COLLINS
Gresham, Georgia

FRESHMEN





FRESHMEN

CLARENCE CONNOR
Dacula, Georgia

WYOMING CORBETT
Fayette, Georgia

SARA DAVIS
Milledgeville, Georgia

ELLIE ETHERIDGE
Lunenburg, Georgia

MAEY COOK
Macon, Georgia

ALICE DAVIS TULLENS
Waynesboro, Georgia

LOIS HICKERSON
Milledgeville, Georgia

ANNE MARY EVANS
Conley, Georgia

BETH COOK
Chick, Georgia

MILDRED DANIELS
Hawkinsville, Georgia

DOROTHY DODD
Fayette, Georgia

WILMA BETH FAIRCLOTH
Suwanee, Georgia

SUSS BERT COPPAGE
Yulee, Georgia

MAGGIE FRANCES BAYSSON
Gibsonville, Georgia

SIBBY BATHMAN
Homer, Georgia

MAEY PATTERSON FISHER
Atlanta, Georgia





LYDIA FULTON
Palma, Georgia

THERESA GRAHAM
Jasp, Georgia

BONNIE HALL
Nichols, Georgia

SARAH HATCHER
Moultrie, Georgia

MARtha FRANKLIN
Valdosta, Georgia

CAROLYN GREENE
Columbus, Georgia

THERA HAMBECK
Ray City, Georgia

JEANETTE HATCHER
Valdosta, Georgia

RUTH GARRITT
Valdosta, Georgia

DEEPEE DORIS GERRIE
Homerville, Georgia

LOUISE HABER
Albany, Georgia

DOROTHY HENDON
Lake Park, Georgia

MARtha GARDNER
Camilla, Georgia

LOIS HAYFORD
Waycross, Georgia

HELEN HARRIS
Valdosta, Georgia

FRANCES HISEE
Quitman, Georgia

FRESHMEN





FRESHMEN

FRANCES HINDON
Waynes, Georgia

LUCILLE HOLT
Eucha, Georgia

JOAN HORTON
Milledgeville, Georgia

WILHELMINE HUSON
Jama, Georgia

BERNETTE ISBELL
Yulee, Georgia

RUBY PEY
Milledgeville, Georgia

MARtha JOHNSON
Yulee, Georgia

EMMA RUTH JONES
Dacula, Georgia

MARSHA JONES
Lakeland, Georgia

MARY JONES
Yulee, Georgia

MARGUERITE JORDAN
Waynes, Georgia

RUBY JORDAN
Waynes, Georgia

JOHNNIE MAE KELLEY
Cuthbert, Georgia

JUANITA KENNEDY
Lawrence, Georgia

WINIFRED KING
Woodstock, Georgia

LOVENA LASSER
Yulee, Georgia





JEANNETTE CLAIRE LAWRY
Yakima, Georgia

BLANCHE LOCKLEAR
Hamoville, Georgia

ELIZABETH MASON
Macon, Georgia

FRANCES MILAM
Dawson, Georgia

ELAHOE LEE
Cairo, Georgia

RUTH LOUGHRIDGE
Kathleen, Georgia

JESSIE MAUDE MASON
Chickasha, Georgia

LORA McFALL
Eaton, Georgia

BESSIE LEWIS
Wilkesville, Georgia

REBECCA LINDY
Baker, Georgia

LUIS MATHews
Yakima, Georgia

KATHERINE MOORE
Macon, Georgia

ELOUISE LINDBERGH
Yakima, Georgia

BLANCHE HARRITT
Gaines, Georgia

ELIZABETH MUNCHREN
Yakima, Georgia

DOROTHY NORMAN
Yakima, Georgia

FRESHMEN





FRESHMEN

LOUNGUS NOBLE
Forsan, Georgia

LOIS PARFORD
Macon, Georgia

OLIVE PINKERTON
Echota, Georgia

SARAH MARTHA PYLE
Yalobusha, Georgia

ROSE MEXON
Galla, Georgia

MYRTLE PARKER
Ladwell, Georgia

MARTHA POWELL
Yalobusha, Georgia

GERALDINE OLIVER
Haverhill, Georgia

SARA NORRIS
Thomson, Georgia

HELEN DALE PARBISH
Milledgeville, Georgia

SALLY PRESCOTT
Wadley, Georgia

HARRIETTE RADFORD
Lewell, Florida

KITTY O'NEAL
Tifton, Georgia

LOIS PERRY
Kingland, Georgia

SARAH ANNE PEHOE
Fitzgerald, Georgia

ANNE RAFFEL
Madison, Georgia





WYNELLE BAY
Rocher, Georgia
CAMELLA BYCROFT
Adel, Georgia
JEANITA LUDWIG
Hemlock, Georgia
WYNELLE SPELL
Wrightsville, Georgia

FRANCES BISS
Peach, Georgia
PAULA DAPP
Cairo, Georgia
EVA MAE SMITH
McEwen, Georgia
WYMAN STANFORD
Adel, Georgia

NORMA BOUTROE
Nana, Georgia
LESLIE SHELLEY
Fors, Georgia
MEL HENRY SMITH
Yulee, Georgia
ELIZABETH STICKLAND
West Palm Beach, Florida

MARJORIE ROGERS
Ridgely, Georgia
JEANETTE SHYRON
New York, N. Y.
ETHEL SMITH
Waynes, Georgia
MIRLE SUMNER
Waynes, Georgia

FRESHMEN





FRESHMEN

GRACE SWEENEY
Rox City, Georgia

LOUISE TYSON
Jeno, Georgia

MADEE WATSON
Lakeland, Georgia

CLYDE THOMAS
Yaldema, Georgia

BETTY VADHAN
Savannah, Georgia

CAROLYN WYORLE
Oulman, Georgia

MARY K. WIENBAKER
Yaldema, Georgia

KATHRYN ZODLE
Yaldema, Georgia

MANELLE VINCENT
Maula, Georgia

ANNIE LAURE WHITE
Waycross, Georgia

FLORIDE ZIFFERSE
Lula Park, Georgia

JANE TWITTY
Yaldema, Georgia

ELIZABETH WADE
Yaldema, Georgia

RUTH WILLIAMS
Waycross, Georgia

VIRGINIA ZEPHUS
Savannah, Georgia







ACTIVITIES

Girl, Girl, our college Girl,
joins in the college whirl,
Clubs and Art and festive play,
and sports on Campus end her day.



ESTHER SMITH



KATHRYN TAYLOR



MARY POLHILL



HENRY KATE GARDNER

STUDENT GOVERNMENT ASSOCIATION

All students of the Georgia State Womens College may become members of the Student Government Association by taking the Fishman Training Course and by signing the pledge. Each has an active part in upholding the responsibilities laid on the individual in the fundamental principles of honor and self-government.

The purpose of this association is to promote the highest standards of honor and integrity in all matters of personal conduct; to promote a general respect for law and order; to strengthen cordial relations between faculty and students; and otherwise to promote the general success of the Georgia State Womens College.

The court is the judicial body of the association which functions in the maintenance of discipline; it is composed of the four class presidents, vice-president and president of the Student Government Association.

The council composed of members from the student body and faculty, has jurisdiction over serious disciplinary problems referred to it by the court, and takes the initiative in the enactment, amendment, or repeal of laws pertaining to the conduct of the students.

The association is a member of the Southern Intercollegiate Association of Student Governments. Each year the outgoing and incoming presidents attend its annual conference.

OFFICERS

HENRY KATE GARDNER	President
ESTHER SMITH	Vice-President
KATHRYN TAYLOR	Secretary-Treasurer
MARY POLHILL	Recorder of Points

COURT MEMBERS

MARGARET CANNON	VIRGINIA SHEPPARD
EMMA AMBOS	JO DANIEL
RUTH JONES	MARY ELIZABETH WEATHERFORD





MARGARET CANNON
VIRGINIA SHEPARD



EMMA AMBOS
JO DANIEL



RUTH JONES
MARY ELIZABETH WEATHERFORD



TWO OFFICERS OF THE S. G. A.



"BLUE MONDAY"



"THE HIGHER COURT"





MILDRED TURNBULL



DOROTHY OGLETTREE



JO DANIEL



EVELYN MAY



MARY ELIZABETH WEATHERFORD

FACULTY ADVISERS

MISS BUSH

DR. HAWKS

DR. DURRENBERGER

FRESHMAN COMMISSION

RUTH BUSH
ALVITA CASPER
LOIS BICKERSON
CAROLYN GREEN
BARBARA HATCHER
WINIFRED KING
RUTH LOUGHDRIDGE

KATHERINE MOORE
MYRTLE PARKER
HARRIETTE ROGERS
KESIE SMITH
MARELLE VINCENT
ANNIE LAURIE WHITE
RUTH WILLIAMS

Y. W. C. A.

The Y. W. C. A. is one of the oldest activities of the campus and ranks with the Student Government Association as one of the largest student organizations in the college.

To encourage and broaden the religious life on the campus, the Y. W. C. A. provides vesper services twice each week, Bible study once a week, and a short watch service each morning before breakfast. In accordance with past custom such services as the candle lighting ceremony, the fire lighting ceremony, and the Christmas Pageant are also perpetuated.

Among the off-campus speakers brought by the Y. W. C. A. this year were Dr. W. A. Smart, Professor of Biblical Theology at Emory University; Miss Lucile McGregor, a G. S. W. C. alumnae, Instructor of Bible at Andrew College; and Mrs. J. C. Thoroughman, another G. S. W. C. alumnae and a Methodist Missionary to China who is in Georgia on furlough this year.

One of the activities continuing the work begun last year is the deputations teams which put on programs in the churches of neighboring towns. A deputation team from Emory gave a program on our campus this year.

The theme of the Y. W. C. A. this year was "Harmonious Living," and in program emphasis was laid upon living harmoniously with one's self on the campus and off the campus.

OFFICERS

MARY ELIZABETH WEATHERFORD	President
MILDRED TURNBULL	Vice-President
DOROTHY OGLETTREE	Secretary
JO DANIEL	Treasurer
EVELYN MAY	Parlor
SHELLY SPARKS	Club House Chairman
ELANOR BAILEY	Sunday School Chairman
BLANCHÉ LOCHLEBAR	Morning Watch Chairman
PEARL WILSON	Music Chairman
CLARA LOUISE DRISKILL	World Fellowship
ELDISE OGLETTREE	Membership
MARY ASKEW	Art Chairman
IDA LEE SHARFMAN	Room Chairman
VANGIE TREMBLE	Entertainment
CLARA DAVIS ADAMS	Deputation Chairman
AMANDA BARKSDALE	Assistant to Vice-President
FRISCOLLA KELLEY	Freshman Commission Chairman





SHILLY SPARKS
 CLARA LOUISE DRISKELL
 SANDIE TENNILE

BLANCOE BAILEY
 EUGENE COLETRIE
 CLARA DAVIS ADAMS

BLANCHE LOCHLENA
 MARY ASKEW
 AMANDA BRACKDALE

PEARL WILSON
 IDA LEE STEINMAN
 PRISCILLA KELLEY



FRESHMAN COMMISSION



"MORNING WATCHERS"





LEONORA DUFOUR

THE PINE BRANCH

The best efforts in student writing are published in THE PINE BRANCH, the college quarterly magazine. THE PINE BRANCH has long been associated with the literary efforts of the students who receive their inspiration from Southern traditions and campus life.

Since the founding of THE PINE BRANCH, it has included both campus news and literary material; however, with the founding of the weekly newspaper this year THE PINE BRANCH has undergone a number of revisions. It has been made into purely a literary magazine; the campus news is now published in the newspaper.

Published in a section abounding in tradition and legend, THE PINE BRANCH has a brilliant future in the literary activity of South Georgia.

PINE BRANCH STAFF

LEONORA DUFOUR	Editor
ETHLYN MASSEY	Assistant Editor
LORENE JOHNSON	}	Contributing Editors
ANTONETTE ANDREWS		
HILDA SUMNER		
LILLIAN BRAGG		
MARGUERITE McCALL	Circulation Manager



ETHLYN MASSEY

LORENE JOHNSON

ANTONETTE ANDREWS

HILDA SUMNER

LILLIAN BRAGG

MARGUERITE McCALL



LEONORA, CARILLE and ETHLYN





ELIZABETH LARHEY

PINE CONE

THE PINE CONE, the year book published by the Senior Class, is a testimonial to the fine and enduring benefits conferred upon it by our Alma Mater. The staff of 1935 has endeavored to manifest a true appreciation of what we consider the four best years of our lives.

Each year the Senior Class makes an earnest effort to carry on the splendid work which has been produced in preceding years. Three PINE CONES have won All-American honor in the National Scholastic Press Association.

MISS GERTRUDE GILMER . . . Faculty Advisor

STAFF

ELIZABETH LARHEY Co-editor
LOUISE AMBOS Co-editor and Business Mgr.
VIRGINIA KIRKLAND Assistant Business Manager
ESTELLE ROBERTS Literary Editor
CAROLYN BRIM Advertising Manager
ELIZABETH WILKES Art. Advertising Manager
HELEN CLAIRE VARNEDOE Snapshot Editor
MARJORIE GROOVER Snapshot Editor
ELSANOR BAILEY Activities Editor
WINNIE DAVIS Art Editor

LOUISE AMBOS

VIRGINIA KIRKLAND

ESTELLE ROBERTS

CAROLYN BRIM

ELIZABETH WILKES

HELEN CLAIRE VARNEDOE

ELIZABETH

MARJORIE GROOVER

ELSANOR BAILEY



"WE'RE ON YOUR TRAIL" "GO-GETTING AD-GITTERS"





LEONORA DUFOUR

THE CAMPUS CANOPY

For a number of years it was felt that one of the greatest needs on our campus was the need for a newspaper in which the latest news of important college happenings could be recorded. This year that dream was realized when **THE CAMPUS CANOPY**, the weekly newspaper, made its first appearance in November. The first quarter it was edited by a group of students interested in establishing a paper as a permanent publication. Later it was published by the class in news writing which used it as a practical guide in learning the technique of newspaper writing and editing.

Long one of the foremost needs in the literary activities of the college, the **CANOPY** occupies a prominent position in the literary activities of the college.

This year two delegates were sent to the meeting of the Georgia Press Institute in Athens in February, and to the meeting of the Georgia Collegiate Press Association at Wesleyan College in April.



EDITOR

STAFF

LEONORA DUFOUR . . . Editor-in-Chief
 LEILA UROGHART . . . News Editor
 AMANDA BARKSDALE . . . Assignment Editor
 DORIS YOUNG
 CAROL FORRESTER
 RUTH WILLIAMS
 MARY AGNES SCANE . . . Assistants
 FRISCOLA KELLEY
 ANTONETTE ANDREWS
 MARGUERITE MC CALL
 VIRGINIA HUGHES . . . Circulation Manager
 LEILA MAE TYSON . . . Advertising
 CAMILLE ROGERS . . . Business Manager



LEILA UROGHART	AMANDA BARKSDALE	DORIS YOUNG
CAROL FORRESTER	RUTH WILLIAMS	MARY AGNES SCANE
FRISCOLA KELLEY	ANTONETTE ANDREWS	MARGUERITE MC CALL
VIRGINIA HUGHES	LEILA MAE TYSON	CAMILLE ROGERS





MARGARET TOUCHTON



ENGLISH CLUB

Since its organization in 1932, the English Club has been devoted mainly to the study of contemporary literature. Its monthly meetings have been given over to discussions of recent poetry, fiction, and drama.

The club endeavors from time to time to bring to the campus interesting literary figures; this year it had as guest speaker Dr. Anderson M. Scroggs, who read and discussed his poetry before the student body.

The English Club has for its aim the creation of an alert interest in contemporary literature, as well as an appreciation for that which has lived through the ages. Its membership is limited to the Junior and Senior English majors who have a high scholastic record.

OFFICERS

MARGARET TOUCHTON	President
ELIZABETH LARISEY	Vice-President
LOUISE HARDY	Secretary-Treasurer

MEMBERS

GERALDINE ABBINGTON
 ELIZABETH BAILEY
 JUDY COCHRAN

KATHRYNE CONNELL
 MABLE GIBSON
 LOUISE HARDY
 HARRIS JORNER
 VIRGINIA KIBELAND
 ELIZABETH LARISEY
 MARTHA LOWREY
 OLA LEE POWELL
 CAMILLE ROGERS
 MARGARET TOUCHTON
 LILA MAE TYSON
 AMES WATKINS



ELIZABETH LARISEY

LOUISE HARDY



INTELLIGENTIA



ENGLISH MAJORS





LOUISE DOON HOWELL

PHI KAPPA AND PHI LAMBDA ATHLETIC CLUB

The Phi Kappa and Phi Lambda Athletic Club have as their purpose the promotion of an effort for physical efficiency, the stimulation of interest in wholesome games and athletic accomplishment, the creation of a spirit of good sportsmanship and the co-operation with other campus organizations in promoting high standards of college life.

To stimulate more interest in the athletic program of the campus, the two associations have been formed into a club whose members are required to demonstrate an active interest in sports. New members have been taken in after they have demonstrated such an interest, and obtained a satisfactory scholastic record for one quarter. The initiation week in January brought many new members into the club.

It has been the custom since 1924 to engrave on the Honor Plaque the name of the association which has obtained the highest scoring in the games played each quarter. Up until last year, when the Lambda's name was engraved the Kappa Association had won this honor. For the fall quarter, American and Flat Ball are played; in the winter quarter, Basketball; and in the spring quarter, Baseball is the rallying sport. During the year the club sponsors a tennis and an archery tournament which bring a spirited challenge to all members.

This year delegates from G. S. W. C. Athletic Clubs were sent to the G. A. A. C. W. Conference held at S. G. T. C. at Statesboro.

The red and white colors of the Kappas and the purple and white of the Lambdas have been displayed in many exciting contests, with each member proud to support her team with singing. "I'm a Phi Kappa boy, and a Phi Kappa boy; and when I die, I'll be a Phi Kappa dead," or "Cheer for the Lambdas, Lambdas to win, fight to the finish, never give in."



CAROL FORRESTER



JO DANIEL





UNA BITCH



MARGARET HUDSON

PEARL WILSON

PHI KAPPA AND PHI LAMBDA ATHLETIC CLUB

OFFICERS

PHI KAPPA

LOUISE ODOM HOWELL	President
CAROL FORRESTER	Vice-President
JO DANIEL	Secretary-Treasurer

PHI LAMBDA

UNA BITCH	President
MARGARET HUDSON	Vice-President
PEARL WILSON	Secretary-Treasurer



ATHLETIC PRESIDENTS



TWO EXHIBITS OF GOOD
SPORTSMANSHIP



PHI KAPPA AND PHI LAMBDA ATHLETIC CLUB INTRAMURAL SPORTS

AMERICAN BALL

LAMBDA—G. EITCH, H. E. GARDNER, G. SWINDLE, E. SMITH, W. BOGGS, E. HARRISON, M. HUSSON, E. HARBETT, F. WILSON, E. TOOLE.
KAPPA—E. LOCKLEAR, L. BRAGG, J. JOUBERT, L. JOHNSON, W. COBBETT, M. WATSON, J. DANIEL, M. TURNBULL, L. C. HOWELL.



FIST BALL

LAMBDA—L. MURKIN, E. E. JONES, V. VINCENT, S. B. MORGAN, C. BYRON, J. KENNEDY, M. CARROLL, W. HUSSON.
KAPPA—E. JOHNSON, L. CORLEY, W. K. HARBETT, W. REISTER, F. NULAIN, F. OLLIFF, S. SWINDLE, M. MORRIS.



BASKET-BALL

LAMBDA—G. EITCH, E. SMITH, J. BROOKS, E. WILLIAMS, J. COOK, M. EDD, E. HARRISON, M. BULLARD, M. HUSSON.
KAPPA—L. UNGER, L. BRAGG, J. JOUBERT, M. E. HARBETT, W. REISTER, L. HAYFORD, L. BAUNSTEIN, S. SWINDLE, S. ANDREWS.





ARCHERY

VERENE JOHNSON
LILLIAN BRUNS

DECK TENNIS

WILMA COOK HOWELL
MARGIE SMITH



**PHI KAPPA AND
PHI LAMBDA**



GOLF

VIRGINIA TUCK
WILLIAMS ROBERTS

GOAT CONTEST

The Athletic Club had its first goat contest this year. Tags were cut in the shape of a goat's head, and drawn in team colors, red and white for the Kappa team, and purple and white for the Lambda team. Each contestant was given three goats. Each team attempted to get the other team's goats by defeating opponents in certain games. A girl could challenge any contestant of the opposing team to any of the specified games and the winner won a goat from the loser. As long as a girl possessed one or more goats she remained in the game. The contestants proudly displayed their goats on sweater fronts until the competition was over. After much keen rivalry and friendly locking of horns, the Lambda team won by a close margin. Challenge matches were played in tennis, archery, golf, deck tennis, horseshoe pitching, box hockey, and croquet. It was unanimously decided by the Athletic Council to make the goat contest a regular feature of our athletic program.

TENNIS

WILMA COOK HOWELL
LILLIAN BRUNS

HORSESHOE PITCHING

LUCILLE WIGST
MARGIE S. SMITH

BOX HOCKEY

ELLEN HARRISON
PATRICIA DANIELS

CROQUET

MIRIAM ADAMS
JO DANIELS





JUDY COCHRAN

GLEE CLUB

The Glee Club of the Georgia State Womens College performs an important function on the campus. This year there are forty members—selected by competitive tests as to excellence of voice and ability to read music at sight—who meet every Monday and Wednesday for an hour's practice under the leadership of Miss Almas Temple.

The culmination of the club activities is the annual concert presented in the spring. The program is composed of two parts: the first of classical music, and the second from semi-classical to well-known popular songs. For the first time in the history of the college, a guest artist, Mr. Paris Lee, of Atlanta, appeared on this program.

EVELYN MAY
ELEANOR BAILEY



LUCY HAMMOND
MARGARET ZIPPLIES



The double trio has added much to the Glee Club this year. The club has entertained at various civic functions in Valdosta, as well as at chapel teas, and dinners on the campus. At the Christmas Festival the Glee Club leads the singing from the whimsical folk carols to the soft chant of "Silent Night."

OFFICERS

JUDY COCHRAN	President
EVELYN MAY	Vice-President
LUCY HAMMOND	Secretary
ELEANOR BAILEY	Treasurer
MARGARET ZIPPLIES	Accompanist



GLEE CLUB

MEMBERS

CAROLYN ASKEW
 BLANCH BAILEY
 EDITH BENNETT
 MARIE BOWER
 FRANCES CARSON
 BOBBIE COCHRAN
 ALIXA GALEY
 RUTH SLUIS
 BLUE ETHEREDGE
 MARTHA GARDNER
 JESSLYN GRIGGS
 LUCY HAMMOND
 MARY LOIS HITCH
 LOUISE ODOM HOWELL
 RHOE IVEY
 BLANCHE LOCKLEAR
 MARGUERITE MCALL
 LORA ROTHGALL
 BEVELYN MAY
 MARIE MIDDLETON
 JOY MILLER
 LUCILLE MURPHY
 DOROTHY OGLEBREE
 JEANETTE SHIFFRIN
 ELIZABETH SIMS
 JUANITA SIEMANS
 ERM MAE SMITH
 LA FOREST SMITH
 HILDA SUMNER
 FLORENCE THARP
 KATHERINE TOOLE
 LESLA MAE TRICH
 MANUELL VINCENT
 MARY ELIZABETH WEATHERFORD
 RUTH WILLIAMS
 PEARL WILSON
 DORIS YOUNG
 FLORIDE ZIFFERER
 VIRGINIA ZIPPLIES



"ALICE BLUE GOWN"

DOUBLE TRIO

JOY MILLER
FLORENCE THARP
EDITH BENNETT
LOUISE ODOM HOWELL
BEVELYN MAY
E. JARVIS (Lead)
PEARL WILSON
MARGARET ZIPPLIES



"THE SLEIGH"





JOY MILLER



MARGARET ZIPPUS

SHELLY SPARKS

PHILHARMONIC CLUB

The Philharmonic Club was organized to fill the needs of the music lovers on the campus, and to have programs in which only the best type of music was enjoyed. These programs have been organized for their educational value.

In addition to its worth-while programs, which were given at its regular meetings, it has also provided attractive features in the social life of the college.

The subject for study this year was "Contemporary Concert Artists." In order to familiarize the members with the most important modern musicians, the club presented a well-organized program which consisted of a study of musicians of the radio and concert world.

OFFICERS

JOY MILLER President
MARGARET ZIPPUS Vice-President
SHELLY SPARKS Secretary-Treasurer

MEMBERS

LOUISE AMBOS
EDITH BENNETT
SARA BINGHAM
BILLIE COLLINS
JO DANIEL
MARY LOIS HITCH
VIRGINIA INGRAH
MARTHA JONES
JOHNNIE MAE KELLER
MARTIL LUNDY
ETHEL WASSER
MARIE MIDDLETON

JOY MILLER
RYSELLE PARKER
ANNETTE PHELPS
SARA MARTHA PYLE
ELIZABETH SIMS
JEANITA SIMONS
EVA MAE SMITH

SHELLY SPARKS
GRACE SWINELLE
VIVIAN WINGENT
PEARL WILSON
DORIS YOUNG
MARGARET ZIPPUS
VIRGINIA ZIPPUS



MUSIC LOVERS



JOY, MARGARET and SHELLY



MISS WARREN





NELLIE MAY GANNON

FINE ARTS CLUB

The Fine Arts Club, limited to those girls who have artistic ability, and who have shown a sincere interest in art, has as its objective for the 1934-35 program the promoting of art appreciation and art interest, not only of the club members, but also of the student body and of the community. The club endeavored to carry out its purpose by means of the annual Christmas bazaar, the production of a puppet play, the proposed visit to the Ringling Art Museum at Sarasota, Florida, and by various exhibits.

These exhibits included a group of Japanese block prints, soap sculpture, etchings from the Philadelphia Association of Etchers, antique jewelry, water colors by pupils of Dr. Martin, of Columbia University, one group of oil paintings loaned through the courtesy of the College Art Association, and another group of oils by Miss Ruth Carpenter, Professor of Art.

NELLIE MAY GANNON President
 FRANCES GARBUTT Vice-President
 LILLIAN BRAGO Secretary and Treasurer

MEMBERS

MARY ADEW
 MARGARET BENNETT
 LARA BINGHAM
 LILLIAN BRAGO

ARYLEA BIRCH
 WYNNE GARD
 MARTHA GAY
 NELLIE MAY GANNON

FRANCES GARBUTT
 FRANCES GIBSON
 JOSEPHINE JOHNSON
 LILLIAN LANG
 KATHERINE MURPHY
 LUCILLE MURPHY
 MARY POWELL
 HAN LEE STEARMAN
 PEARL THOMAS
 DORIS SWINDLE
 ANNE TAYLOR
 ELLEN LEE THOMPSON
 JOYCE TITTON

FRANCES GARBUTT
 LILLIAN BRAGO



ARTIST AT BASE



PUTTING NATURE ON CANVAS





MARJORIE GROOVER



INTERNATIONAL RELATIONS CLUB

The International Relations Club, realizing the importance of a knowledge of our country's affairs, has for its aim the study and discussion of the national and international events which are daily transpiring within and without our borders, and which vitally concern our American life and institutions.

The Carnegie Endowment for International Peace presents the International Relations Club each year with a number of books discussing the international topics of the day, thereby increasing the private library of the club.

OFFICERS

MARJORIE GROOVER	President
SARA RACHEL CORWELL	Vice-President
ESTHER SMITH	Secretary
LUELLE GIDDENS	Treasurer
CLARA LOUISE DRISKELL	Member-at-Large

MEMBERS

LOUISE HANCO	BESSIE JO JOHNSON
SARA BISHMAN	NELLY JOHNSON
MARGARET BULLARD	NETTE JOHNSON
LENA LALLEBERG	WILLIENE JOHNSON
MARCEL CORWELL	MARGARET BULLARD
EDWIN E. DAVIS	KATHERINE WILSON
MARY DEARDO	LAURA WALCOO
CLARA VONNE DRISKELL	ETHEL WALKER
FRED BLISS	SCOTCHER GILBERT
EMILY FLETCHER	VIRGILIA CHESTER
MARTHA SLAY	LOIS SIMMONS
LUELLE GIDDENS	ESTHER SMITH
MARJORIE GROOVER	LUELL GIDDENS
BROWN HUTCHINSON	MARY ELIZABETH WEATHERFORD



SARA RACHEL CORWELL CLARA LOUISE DRISKELL
LUELLE GIDDENS ESTHER SMITH

"ON THE BEND"



"WITH COSMOPOLITAN MINDS"



I. E. C.





DORIS YOUNG

MARY POLHILL

LUCY HAMMOND



CARDLYN BRIM

ENTRE NOUS

Entre Nous was organized in the fall of 1932. It is the youngest club on the campus, but it has already created a place for itself.

The purpose of the club is "To promote interest in France and French literature through reading and conversation." Majors and minors of the two upper classes, and sophomore majors with high scholastic records are eligible for membership.

The club is taking for its project for the year the presentation of several French plays which will be of interest to the entire student body. The first play presented was "La Dame de Bonne et le Monsieur de Cristal," a one-act comedy by Henri Duvernois. The cast was as follows:

Madame Soucier	CARDLYN BRIM
Monsieur Soucier	LOUISE HARDY
Alique, the Doctor	MARY ALDERMAN
Monsieur Passandege	DORIS YOUNG
Le Prince	CLARA LOUISE DRISKELL

OFFICERS

CARDLYN BRIM	President
DORIS YOUNG	Vice-President
MARY POLHILL	Secretary-Treasurer
LUCY HAMMOND	Parliamentarian

MEMBERS

MARY ALDERMAN
 CARDLYN BRIM
 JANET COOK
 CLARA LOUISE DRISKELL
 LUCY HAMMOND
 LOUISE HARDY
 DOROTHY JOHNSON
 BETH JONES
 SARAH OWENS
 MARY POLHILL

OLA LEE POWELL
 KATHLYN TAYLOR
 MARGARET TOUCHTON
 HELEN CLARE VARNHODE
 DORIS YOUNG



LES MEMBRES DU CLUB



MADENOISELLE



"LA DAME DE BONNE ET LE MONSIEUR DE CRISTAL"





AMANDA BARKSDALE

MATH-SCIENCE CLUB

The Math-Science Club gives students an opportunity to work on projects in which they are particularly interested. In order that this may be done to advantage, the club is divided into three groups—Math, Chemistry and Biology. Each group has its leader, although all are under the supervision of the president of the entire club.

The mathematicians have as their project this year the making of geometrical constructions which may be used in future class work.

Students who were interested in Chemistry constructed a periodic chart of the elements. This chart impressed more readily on our minds the elements, their uses, and their compounds.

The Biology department worked on the collection and classification of the flora and fauna of Valdosta.

The Math-Science Club held only one meeting each quarter, but the various departments met more frequently to plan and discuss their projects. Several outstanding speakers were guests of the club at various times.

OFFICERS

AMANDA BARKSDALE President
 CLARE LAWSON Vice-President
 MARION REID Secretary-Treasurer

MEMBERS

EMMA AMBOS
 ANTONETTE ANDREWS
 CLYO BARRELL
 AMANDA BARKSDALE
 MARGARET BERRYHILL
 HELEN CARTER
 JO DANIEL
 RUBY JONES
 VANELLE KENDALL

MARGARET ZIPPLIS

CLARE LAWSON
 JESSLYN MOSELEY
 MARION REID
 IDA LEE STEARMAN
 HILDA SUMMER
 ELIZABETH TELLMAN
 LUCILLE THOMPSON
 LELA WOODHART
 MARGARET WADE



CLARE LAWSON

MARION REID



TRIO OF SCIENTISTS



ARACIA



SCIENTIFIC WINDS





ESTELLE ROBERTS

SOCK AND BUSKIN

The Sock and Buskin Club has as its purpose one akin to that of the now prevalent Little Theatre Movement: namely, the creation of a National Drama. It desires to create among the members of the student body an interest in and an appreciation of the best that may be found in the world of the theatre. Among its own members dramatic ability is encouraged through the medium of stage productions, and various interests are stimulated by means of lectures on stage technique, make-up, and lighting.

The three-act play presented this year was *The Swan*, a romantic comedy, by Ferns Molnar. The scene is laid in a mythical European Kingdom, which forms a perfect background for Molnar's clever lines, flashing wit, and delicate pathos. In the play, the Princess Beatrice intends to marry off her daughter, Alexandra, to a prince of the reigning house, and her efforts to consummate this marriage form the basis for the plot. The cast included:

Dr. Aji, W. Roberts; George, M. Turnbull; Arsene, U. Ritch; Princess Beatrice, B. Hutchinson; Alexandra, H. K. Gardner; Father Hyacinth, E. Roberts; Symphosoa, L. Johnson; Prince Albert, L. Bragg; Colonel Wunderlich, V. Tuck; Caesar, C. Barber; Maid, V. Trimble; Princess Maria Dominica, L. Du Four; Ladies-in-waiting, R. Williams, M. Tillman; Alfred, M. Hudson.

Membership is determined by annual try-outs; the club at present is composed of thirty active members, several honorary members, and the director of the organization, Miss Louise Sawyer.

OFFICERS

ESTELLE ROBERTS President
VANIGIE TRIMBLE Vice-President
MARY AGNES ROANE Secretary-Treasurer



VANIGIE TRIMBLE

MARY AGNES ROANE



"FUTURE CORNELLS"



OFFICERS



DIRECTOR



SOCK AND BUSKIN

MEMBERS

CLARA DAVIS ADAMS
CLEO BARBER
LILLIAN BRAGG
BOBBI COCHRAN
SACHIE COXWELL
LEONORA DUFOR
HENRY KATE GARDNER
MARTHA GARDNER
MARGARET HUGGON
BRIQUIN HUTCHINSON
LORENE JOHNSON
JOSEPHINE JOUBERT
FRISILLA KELLEY
ANNIE KATE KNIGHT



ROMANCE OF THE WILLOW PATTERN

Cast

KOOHS-SEE Martha Tidner
CHANG Norma Gardner
THE MANDARIN Virginia Tuck



SOCK AND BUSKIN

MEMBERS

JESSE LANGDALE
 KATHERINE MORGAN
 CARROLL PEPPLES
 MARION BOO
 URA BITCH
 MARY AGNIS BOANE
 ESTELLE ROBERTS
 WILBINE ROBERTS
 LA ACRES ST. SMITH
 MATILDA TELLMAN
 VANGIE TRIMBLE
 VIRGINIA TUCK
 MILDRED TURNBULL
 LELA URODHART
 RUTH WILLIAMS



Above THE CONFLICT

Cast

ERILE Wilcox Roberts
 BOB Ura Bitch
 BESS Cleo Barber
 THE MOTHER Bron Hutchinson

Right

WHEN THE WHIRLWIND BLOWS

Cast

MADAME ELIZABETH ANDROVIA Vangie Trimble
 JOSEFA Henry Kohl Gardner
 ANNA Lillian Begg





SCENE OF MERRIE, PAGE, AND COURT FOOL



Ye Old English Christmas Festival

"Then bring with a noise, my merry boys,
The Yule log to the Fring;
For my good dame she bids you all be free,
And sing to your hearts desiring."

Thus with the singing of the Yule song, Ye Old English Christmas Festival, the merriest and most colorful celebration of the college, begins. The celebration, dating from the first Christmastide of the college in 1913, was instituted in the desire to enrich the life of students by leading their emotions to flow in the channels of social custom which flow down from the joyful infancy of our people. It has grown deep into the life of the college, and has become one of its loveliest traditions.

The Lord of Merrle has charge of the merrymaking during the evening, at which the Lord of the Manor and his court preside. The colorful old custom of bringing in the boar's head, accompanied by the singing of carols by the Glee Club, opens the festivities.



"THE FOOLISH FUNNIES"
"CERTAIN DANCERS"
MORRIS MEN





"SAVERS"



"HISSEY HISSIE"
PUMPKIN AND PUMPKINETS
YE LORDS AND LADIES

Ye Old English Christmas Festival

The meriment of the Festival is furnished by the fool of the court and her underlings who reign over the funster's follies. As the evening progresses the mood of the entertainment changes from one of merrymaking to one of reverence and appreciation for the spirit of Christmas.

The colorful decorations of the feast hall, the quaint costumes of "ye compayne," and the general happy spirit of good will and cheer prevail through the capers of the fool, the festive dancers, and the familiar carols sung at intervals during the program. The merrymaking and revelry diminishes, and is replaced by a slower movement, and as a final number, the lords and ladies dance the stately minuet.

With the singing of *Silent Night*, the candle-light recession forms; after which comes a general exchange of Christmas greetings.





MAY QUEEN—MISS VIRGINIA HUTCHINSON

MAY DAY

One of the loveliest traditions at the college is the annual May Day celebration, a gala occasion in which every student takes part, from the Queen of the May, selected from the senior class by popular vote, to the peasantry, representing all the classes. Songs and dances on the green in which the peasant folk express the age-old sentiments regarding May Day—old English traditions featured by pinics, milk maids, Morris Men, lords and ladies—Greek mythological portraels depicting the legend of Ceres—the winding of the var-colored may poles—the lovely procession of the May Queen and her court—all typify the spirit of the May Day celebrations from the time of the Druids to the present day.

All of the pageantry and simple splendor that marked the celebrations of the Celts is carried on as a tradition at the college each May Day.



MAY DAY



QUEEN, MAID-OF-HONOR,
AND TRAIN BEARERS—MRS
VIRGINIA HUTCHINSON,
MISS MARTELL TURNER,
BOBBI SNOW, AND JOHAN
WIDDINS.



QUEEN, MAID-OF-HONOR,
AND LADIES-IN-WAITING.



QUEEN AND HER COURT



MAY DAY



QUEEN, LORDS, AND HERALDS



LADIES-IN-WAITING



PIRATES' GOLD



PROSERPINE'S COMPANIONS



MAY DAY



VILLAGE FLIRTATION



STICK DANCERS



PORTLAND TANCE



MAY POLE DANCE



PLAY DAY

Play Day, a new movement in the field of Physical Education, was originated at G. S. W. C. in 1931. It proved so successful that it has become a full-fledged annual "activity," anticipated in alike by students and guests.

The aim of Play Day is to help the work being done all over the country to spread the knowledge and use of new and interesting games to other schools, and to encourage friendship between the high schools and colleges.

There is no school rivalry, no playing merely to win, no individual honor to be gained, but a day spent in learning new games, playing old ones, and enjoying the comradeship of play.

By ten-thirty, guests from high schools in all sections of the South-



BACK TENNIS



SHOOTING AT THE BULL'S EYE



BOX HOCKEY



WORKING HORSE SHOES

CROQUET



TENNIS OFF



PLAY DAY UNWINDS
WHILE THE GALLERY LOOKS ON





G. E. W. C. AS HOSTESS
LOADING THE ARROWS

AFTER THE GAMES



PLAY DAY

are part of the state have arrived and been organized into teams for Play Day. The whole morning is given over to the campus games, in which sports, games and stunts predominate.

Archery, golf, tether ball, bow hockey, tennis, volley ball, and soccer play a large part in the program of the day.

As the noon hour arrives points are tabulated and the winning team receives the honors that they have won.

A picnic lunch under the pines is served at one o'clock, bringing to a close the sports program of the day.

These sports are followed in the afternoon by the elaborate Old English May Day Festival.



SENIOR PLAY
IMAGINARY INVALID
MOLIERE



"AH! MONSIEUR, BE TOUCHED BY HER PRAYERS AND WINE."



"AH! YOU DECEPTFUL CHILD, YOU KNOW VERY WELL WHAT I MEAN."



"TOINETTE, WHY DID YOU MAKE MY HUSBAND ANGRY?"



"I MUST TELL YOU THAT YOU CANNOT GIVE ANYTHING TO YOUR WIFE BY WILL."



SENIOR PLAY
IMAGINARY INVALID
MOLIERE



"TELL ME MY FATE, AM I TO LIVE, OR DIE?"



"WITHIN FOUR DAYS YOUR CONDITION WILL BE INCURABLE!"



"BUT IT LIES WITH YOU ALONE TO DISMANTLE THIS ILL-HUMOUR."



"MONSIEUR, WILL YOU LET ME GIVE YOU SOME ADVICE—AS A FRIEND?"





BROUN HUTCHINSON

VALDOSTA CLUB

The Valdosta Club is an organization composed of the alumnae of the Valdosta High School. It holds monthly meetings of a social nature, including luncheons, tea dances, and specialty features. The purpose of the club is to promote a friendly feeling between the boarding and day students, to emphasize the social life of the college, and to be a means of interesting the activities of the day students and the town.



ELIZABETH LARISEY

ANNE TURNER

JESSIE CATLEDGE LANGDALE

OFFICERS

BROUN HUTCHINSON	President
ELIZABETH LARISEY	Vice-President
ANNE TURNER	Secretary
JESSIE CATLEDGE LANGDALE	Treasurer

MEMBERS

HELEN ASHBROOK	BROUN HUTCHINSON	CARROLL PEELER
BESSIE AUSTREY	ERNESTINE ISBELL	MARY PERRY
RHONA BARFIELD	MARTHA JENNINGS	EDNA EARLE FLEMING
SARA BINGHAM	NELLIE JOHNSON	MARTHA POWELL
RUTH NELL BOWEN	NETTIE JOHNSON	OLA LEE POWELL
ANN BROOKS	NOELLE JOHNSON	SARA MARTHA PYLE
JANE BROOKS	MARTHA JOHNSTON	OWEN DOLPH QUAMER
LEILA CALLENDER	MARY JONES	WILLENE ROBERTS
MARY NELL CARLYLE	RUFY JONES	LOIS SIMPSON
HELEN CARTER	CLYDE KENDALL	LA FOREST SMITH
KATHRYNE CORNELL	VANELLE KENDALL	KATHRYN TAYLOR
SUSIE COFFAGE	LINELLE LANG	CLYDE THOMAS
LOIS CORLEY	JESSIE CATLEDGE LANGDALE	LORENE THOMAS
MARGARET DALTON	ELIZABETH LARISEY	ELIZABETH TILMAN
WYNNE DAVIS	ARBY LEFRANCOI	KATHERINE TOOLE
MARTHA FRANKLIN	JEANETTE LAUREY	MARGARET TOUCHTON
NELLIE MAY GANNON	ELOISE LINDBERGER	ANNE TURNER
FRANCES GARBUTT	CATHERINE MCGREGOR	JANE TWITTY
RUTH GARBUTT	SUSIE MATHEWS	HELEN CLAIR VARNDEDE
LUELLE GOODING	ELIZABETH McLEACHEN	SUELLA WILLIAMS
RUTH GOWEN	MAY BELL MORLEY	MARY KATHERINE WISEBAKER
FLORA GRIMES	GEOETHY MORGAN	DORIS YOUNG
BILLIE HAHN	JESSELYN MUGLELY	
JEANELLE HATCHER	LUCILLE MURPHY	
MARY BETH HIGH	BARNIE LOG NEWSON	
GRACE HILHOUSE	SARA O'BYRNE	
MARY LOG HITCH	EMLY PARKER	



WHEN TOWN GIRLS PLAY



OFFICERS



ADVISER





ELIZABETH MURRE

EVA CHANDLER

CLARICE



AUGUSTA BENTZ GULLIVER

THE ALUMNAE ASSOCIATION

The purpose of the Alumnae Association is to combine former G. S. W. C. students into an active off campus group. The organization strives to preserve the ideals of the college, and to extend its influence through its membership of more than a thousand graduates. The privileges of active membership are granted to those who have received a degree or a diploma; those who have completed one year of college work are eligible for associate membership. Each year the association provides a scholarship for some girl who meets certain definite qualifications.

The association published an alumnae issue of *The Campus Canopy* in April as one of its projects for the year. A luncheon was given at the meeting of the Georgia Educational Association for the alumnae of the college, and a garden party was given in the park adjoining the campus for the Valdosta alumnae.

OFFICERS

AUGUSTA BENTZ GULLIVER	President
ELIZABETH MURRE	Vice-President
EVA CHANDLER	Secretary-Treasurer
CLARICE IVEY	Corresponding Secretary







SUPERLATIVES

What are these girls made of, made of?
What are these girls made of, made of?
Sugar and spice and the best of things nice,
That's what these girls are made of.



Miss Henry Kate Gardner

MOST VERSATILE



Miss Eleanor Bailey

MOST REPRESENTATIVE



Miss Emily Fluker

MOST INTELLECTUAL



Miss Virginia Sheppard
MOST ATTRACTIVE



Miss Elizabeth Larisey
MOST OUTSTANDING DAY STUDENT



Miss Annie Belle Weatherford

MOST ATHLETIC

Freshman Who's Who



MARGARET CANNON
Most Representative



JANE TWITTY
Most Outstanding Day Student



VIRGINIA ZIPLIES
Most Attractive



BLANCHE MABBETT
Most Popular



RUTH WILLIAMS
Most Versatile



HARRIETTE ROGERS
Most Athletic

Greater G. S. W. C.



MUSIC STUDIO



SENIOR HOUSE



GARDEN AT SENIOR HOUSE



HOUSE IN THE WOODS





GOOD - B Y E

Student, Student, full of knowledge,
Now is through with books and college.
She's learned to love, and learned to hate,
She's ready now to graduate.

PATRONS' PAGE

- Bennett's Drug Store
 - The Benson Company
 - Veron Blackburn
 - Brookwood Pharmacy
 - Churchwell's Department Store
 - Citizens and Southern National Bank
 - City of Valdosta
 - Coca-Cola Bottling Company
 - Copeland Brothers and Company
 - First National Bank
 - Foote & Davies Co.
 - Foremost Ice Cream
 - Friedlander's Store
 - W. T. Grant Company
 - Georgia Power and Light Company
 - Georgia State Womens College
 - Hotel La Touraine Coffee
 - John Oliver Service Station
 - S. H. Kress and Company
- Le Files Automotive Service
- Lindbergh Restaurant
 - McCroy's
 - McElvey-Futch Company
 - Mathis and Youmans Company
 - Model Bakery
 - Paxon's Turner Jones' Store
 - A. S. Pendleton Company
 - Rhodes-Collins Furniture Company
 - Ritz Theatre
 - Southern Stationery and Printing Company
 - Star Laundry
 - Stewart Candy Company
 - Stump Brothers
 - Suitsus
 - Superior Baking Company
 - Thompson and Girardin
 - Valdosta Flour Company
 - Vallotton's Dairy
 - C. C. Varndoe and Company

The Georgia State Womans College

THE Georgia State Womans College is, by action of the Board of Regents, the liberal arts college for women of the University System of Georgia. It is a standardized institution and is a member of the Association of Georgia Colleges, the Southern Association of Colleges and Secondary Schools, and the Association of American Colleges. All its courses are on the University level for a Bachelor of Arts degree.

It offers thorough courses in Art, Biology, Chemistry, Education, English, including Vocal Expression, History and Political Science, Economics, Sociology, Foreign Languages, ancient and modern, Mathematics, Music, instrumental and vocal, and Physical Education. Credit for any of these courses will be accepted in any branch of the University System or any standard college.

It has a beautiful plant in a very healthful region, and a climate unsurpassed during the school session. Additions to the physical plant for 1935-36 will include a new dormitory, a swimming pool, and an extension to the gymnasium. Expenses are extremely moderate, not exceeding \$230.00 a year.

"The policy of the college has long been to offer an educational service so excellent that the wealthiest citizen cannot provide a better for his daughter; a service so moderate in cost that the poorest girl, if she has the will, can share its advantages."

For further information, address Georgia State Womans College, Valdosta, Georgia.

MODEL BAKERY
QUALITY BREAD, CAKES AND PIES
Valdosta's Oldest Bakery
THERE'S A REASON

COMPLIMENTS
• OF •
W. T. GRANT COMPANY
1c to \$5.00 Junior Department Store

COMPLIMENTS
• OF •
GEORGIA POWER AND LIGHT COMPANY

COMPLIMENTS
• OF •
VALDOSTA FLOUR COMPANY
... Distributors of ...
White Ring • Omega and Fluffy Ruffles Flour
and Complete Line of Fancy Groceries

VALLOTTON'S DAIRY
Special Milk for Babies and the College Girl Complexion

CHURCHWELL'S DEPARTMENT STORE
College Girls' Headquarters

"NEVER BUY BEFORE YOU TRY"
FRIEDLANDER'S

VERAN BLACKBURN
PHOTOGRAPHER FOR
PINE CONE
1935

VALDOSTA COCA-COLA BOTTLING WORKS, INC.

COCA-COLA

Valdosta

Georgia

FOREMOST ICE CREAM

• IT'S HEALTHFUL •

LINDBERGH RESTAURANT

Famous for Western Steaks

Best Coffee in Town

COMPLIMENTS

• OF •

Quality
Dairy Products

SUITSUS

Quality
Registered Jerseys

DAIRIES, INCORPORATED

COMPLIMENTS

RITZ
A MARTIN THEATRE
Phone 361
The Home of Hits!

PALACE
A MARTIN THEATRE
Phone 1231
Where Pleasure Costs So Little!

STEWART CANDY COMPANY

Everything in Wholesale Candies and Crackers

LE FILES AUTOMOTIVE SERVICE

PHONES 160-161

Valdosta

Georgia

A Complete Service for Your Car

COMPLIMENTS
• OF •
THE A. S. PENDLETON COMPANY

JOHN OLIVER SERVICE STATION
Firestone Tires • • Amoco Products
Valdosta, Georgia

BENNETT'S DRUG STORE
THE REXALL STORE
Toasted Tasty Sandwiches • McPhail's Ice Cream
Valdosta, Georgia

COMPLIMENTS
• OF •
FIRST NATIONAL BANK
Valdosta, Georgia

THE BENSON COMPANY
• Dry Cleaners •
Valdosta, Georgia Phone 486

MATHIS AND YOUNG COMPANY
Pianos • Victrolas • Radios
Everything in Music

BROOKWOOD PHARMACY
• Just off the campus •
"YOUR PATRONAGE IS APPRECIATED"

COMPLIMENTS
• OF •
SUPERIOR BAKING COMPANY

SERVING VALDOSTA FOR MORE THAN A THIRD OF A CENTURY

Here's to Our Good Friends—The G. S. W. C. Girls

STAR LAUNDRY
Dry Cleaners • Rug Cleaners

PHONE 54

WE SERVE TO PLEASE AND WE ARE PLEASED TO SERVE

THOMPSON AND GIRARDIN

Jewelers

120 North Patterson Street • Valdosta, Georgia

PAXON'S TURNER JONES' STORE

Our inexpensive footwear of highest quality reflects the
smartest trends in fashions for all occasions

JITNEY-JUNGLE STORES

SAVE • SERVE • SATISFY

Valdosta's Own Food Stores

COMPLIMENTS OF

McCRORY'S

Five and Ten Cent Store

We are Proud of the

Georgia State Womans College

• • •

WE ARE GLAD TO TAKE THIS OCCASION TO SAY
THAT THE

City of Valdosta

is proud to list among its greatest assets the Georgia State
Womans College, and we hope that Valdosta as a
city makes a favorable and lasting impression on
the minds of the young ladies who make up
the student body of this great institution.

THE CITIZENS AND SOUTHERN NATIONAL BANK

Valdosta * * Georgia

CAPITAL \$5,000,000.00

WE ARE PROUD OF THE FACT THAT

HOTEL LA TOURAINÉ COFFEE

IS SERVED AT THE GEORGIA STATE WOMANS COLLEGE

W. S. QUINBY COMPANY

Jacksonville * Miami

*"Successful purveyors to leading Hotels, Restaurants and Institutions
for over 30 years"*

COMPLIMENTS

* OF *

S. H. KRESS AND COMPANY

5c, 10c and 25c Store

SOUTHERN STATIONERY AND PRINTING COMPANY

Wholesale Paper Dealers

Commercial Stationers * Printers * Office Outfitters

Valdosta, Georgia



Complete
EQUIPMENT

A FUTURE FACTOR IN THE SUCCESS
FOR A SUCCESSFUL BUSINESS

THE SERVICE OF
FOOTE & DAVIES COMPANY

MAKES GREAT METAL OF THE PROBLEMS OF
CREATING - PLANNING - LAYOUT AND DESIGN

OPERATING - FINISHING - UPKEEPING

AND BRINGS TO HOME IN ONE
PLACE AN EXPERT CONSULTANT
USING THE BEST OF
MATERIALS

!

STUMP BROTHERS

Paints and Builders' Supplies

RHODES-COLLINS FURNITURE COMPANY

Complete House Furnishers

C. C. VARNEDOE AND COMPANY

"Valdosta's Store Dependable"

LADIES' APPAREL AND ACCESSORIES

COMPLIMENTS

• OF •

COPELAND BROTHERS AND COMPANY, INC.

• Makers of •

THE BEST SAUSAGE IN GEORGIA



**AND
THAT'S THAT**